

River Valley  
Polled Herefords

Presents

# Genetic Designs XVIII



6:30 PM • Friday, September 16, 2022  
At the Farm, Newburgh, ON





# Welcome

to River Valley Polled Herefords

**Ontario Hereford Weekend:**

**Friday: River Valley Genetic Designs XVIII**

**Saturday: Elm Lodge & Friends**

**Sunday: Autumn Alliance**





# Genetic Designs XVIII Sale

Friday, September 16, 2022 • 6:30 pm  
At the Farm • Newburgh, ON

*Cattle can be viewed during the week prior to the sale.*

Pictured here is the main cow barn yard and where the Genetic Design Sale takes place.

This past year we calved out over 180 Hereford females with plans to calve out in excess of 200 for 2023. The River Valley philosophy is quite simple. We demand cattle with phenotype, diversity, udder quality, foot structure, EPD's and overall balanced body condition. We are proud of our 2022 offering and would love to give you a tour to witness them in the flesh anytime prior to sale day. Plan for an Ontario Hereford weekend and join us on the Friday afternoon.





## DEAR FRIENDS AND FELLOW HEREFORD BREEDERS,

It is our pleasure to welcome you to the farm on September 16<sup>th</sup>. This past year we have been concentrating on adding "Genetic Gems" to our herd profile.

We spend a lot of time evaluating our cattle and giving attention to the type of animals that make a profit at market, as well as being competitive when they "go to town".

We believe that great bulls and sound, broody females are the foundation of the herd. With the addition of Evolve and with females like 71G, we hope you will agree.

Whether you are looking for that special show animal, 4-H project, herd sire or female to enhance your herds genetic potential, we invite you to take a look at our offering.

These past several years have caused a swing in the consumer's attention to where their food comes from. Farm gate sales of beef are at an all-time high. Quality products are in demand and farm raised Hereford beef can't be beat! Now is the time to make sure your herd is producing at its best.

Plan on starting your "Hereford weekend" by joining us Friday at 6:30 pm.

As always, if we can be of any assistance to you prior to the sale, please call our office or any of our sale representatives. Videos of the cattle are available through our website.

We look forward to seeing you at the farm!

Sincerely,

*Elwyn, Donald and Pauline*

## FROM THE DESK AT T BAR,

Welcome to the 2022 edition of "Genetic Designs" hosted by River Valley Polled Herefords, the Embury family at Newburgh, Ontario. Elwyn, Pauline and Donald are truly dedicated to the field of agriculture and sourcing products that most of us take for granted. For them, the challenge is showing leadership in feeding the people of the world.

The Genetic Design offering is laden with opportunities for livestock enthusiasts large or small. What a lineup of first and second calvers... many with fancy calves at foot. The genetics bred into this lineup are amongst the world's finest. As you scan through the catalogue, you will find that virtually every sire used is a leader in necessary genetic traits whether it be calving, growth, carcass or maternal. You will be impressed by the broodiness of the two's and three's, their udder types and their calving convenience... Donald has done a bang-on job of getting them bred with early services. Two outstanding herd sire prospects are included in the offering... both are uniquely bred and genetically powerful. Genetic Designs XVIII is an opportunity to explore and discover the genetic product that will move your program forward.

The start of the "Hereford Weekend" in Ontario is hosted by a wonderful family who have a lot on their plate... be it steak or eggs and through their busy agenda, they still attend and support virtually every event either in person, on the phone or on the wire... always selecting the top ones to enhance a very successful program.

The market is strong and gaining momentum virtually daily... the North American cow herd is depleted, and restocking will not happen overnight. Now is the time, to upgrade your supply with high quality breeding stock... don't be a member of the "wish I had" club.

Plan to be with us to start the fall run at River Valley whether it be in person, on the telephone or online. Feel free to call any of the T Bar team, as we can assist you with your selection in a confidential and professional manner.

*Chris Poley*

**Sale Management**

T Bar C Cattle Co. Ltd. | Box 2330, Warman, SK S0K 4S0  
P: 306-933-4200 | F: 306-934-0744 | info@tbarc.com | www.tbarc.com

2



**Chris Poley**  
306-220-5006



**Ben Wright**  
519-374-3335



**Shane Michelson**  
403-363-9973



River Valley Polled Herefords





# Genetic Designs XVIII Sale

Friday, September 16, 2022 • 6:30 pm

At the Farm • Newburgh, ON

*Cattle can be viewed during the week prior to the sale.*

## River Valley Polled Herefords

Elwyn, Donald & Pauline Embury  
240 Embury Rd RR 1  
Newburgh, ON K0K 2S0  
Cattle Office: (613) 378-2701  
Main Office: (613) 378-6632  
Fax: (613) 378-1646 Res: (613) 378-2224  
Website: [www.rivervalleyherefords.com](http://www.rivervalleyherefords.com)  
Email: [rivervalleyherefords@kos.net](mailto:rivervalleyherefords@kos.net)

## Genetic Affiliate

Thurston Livestock  
Ivor & Katrina Thurston  
243 Pine Grove Rd RR1  
Lanark, ON K0G 1K0  
Phone: 613-324-4864  
Email: [ivort88@gmail.com](mailto:ivort88@gmail.com)

*Pictured: 2019 Junior Heifer Calf Champion,  
RVP 119D Gabriel 172G, purchased through  
Genetic Designs Sale*

### Sale Day Telephones

Pauline's Cell 613-530-5726  
Donald's Cell 613-328-9065

### Auctioneer

Chris Poley 306-220-5006

### Sale Representatives

Ben Wright 519-374-3335  
Shane Michelson 403-363-9973  
Chad Wilson 306-577-1256  
Dale Stith 918-760-1550  
Carl Wright 519-369-7489  
Levi Rimke 204-851-4515

### Hereford World

Joe Rickabaugh 785-633-3188

## Acknowledgments

### Veterinary Services

*Dr. Ron Herron - Embryo Transplant Services*

*Dr. Paul Tuman - Nutrition & Herd Health*

*Bay of Quinte Vet Cattle Services*

*Thank you for all your help!*

### Online Viewing & Bidding Available

Contact: Mark Sologan (DLMS) 780-699-5082

**Internet Bidding Available**

**DLMS**

[www.dlms.ca](http://www.dlms.ca)

For more information Call DLMS Reps:  
Mark Shologan 780.699.5082  
Whitney Bosovich 780.991-3025

### Accommodations

River Valley has reserved a block of rooms at a special rate at the following hotels:

#### Hampton Inn (14 minutes from Newburgh, ON)

613-354-5554  
40 McPherson Drive, Napanee, ON K7R 3L1  
\$159.00 per night plus HST - single

#### Comfort Inn & Suites Napanee

613-900-2100  
31 Community Rd, Napanee, Ont K7R 3L1  
\$139.00 per night plus HST - single. When booking, please request the "River Valley Herefords room rate" to receive this deal.

Please contact the Cattle Office at 613-378-2701 or [rivervalleyherefords@kos.net](mailto:rivervalleyherefords@kos.net) for assistance with reservations. Credit card required to hold rooms.

**CANADIAN  
BEEF SHOW**



*The Royal*  
AGRICULTURAL WINTER FAIR



*View the catalogue online at:*

**[www.rivervalleyherefords.com](http://www.rivervalleyherefords.com) and [www.buyagro.com](http://www.buyagro.com)**



# THE FUTURE OF RV...



RVP 9050 Architect 46A - Sire







1

**RVP 46A Gaiety 71G**  
 Polled RVP 71G  
 January 22, 2019  
 FEMALE  
 C03058027

BOYD WORLDWIDE 9050 ET  
 RVP 9050 ARCHITECT 46A (DLF HYF IEF) P C02981745  
 RVP RCY 100W YE HAW 130Y

TOP CROSSOVER Z400  
 RVP Z400 YAH00-EE 121E P C03032087  
 BLAIR-ATHOL 100W YAH00 4B

SHF RIB EYE M326 R117  
 MSU TCF RACHAEL 22S ET  
 NJW 73S M326 TRUST 100W ET  
 RVP 36N TOUCH OF GOLD ET 10T  
 TH 133U 719T UPGRADE 69X  
 ASH LIL PEANUT 203P  
 NJW 73S M326 TRUST 100W ET  
 RVP 179W YIPPY KI YI YEA 11Y

EPD's CE: 7.9 BW: 0.0 WW: 52.4 YW: 84 M: 27.7 TM: 53.9

## Selling the Right to Flush:

71G has become a popular choice of many visitors to the farm for her incredible look and dark pigment. She ties everything together we strive for here at River Valley. Ideal display of EPD's partnered with a few of the old time greats that were raised here at the farm. Architect defines phenotype to his females with excellent udders. The Yahoo cow family has left us broody looking females with nice udders. Study the pedigree and you will find a long list of exceptional cows, with the "cow maker" Trust showing up back in her pedigree. 71G's producing abilities are easily displayed in the son that was born this year and will become a main herdsire here at River Valley. 71G is due early to the \$92,000 Evolve for an exciting baby come 2023. Saying that, on this flush we will allow the buyer to access our exclusive semen inventory to flush 71G to. Of course that includes Evolve, Authority, and Online to name a few. We will guarantee 6 embryos with an open top. Payment 1/2 down sale day, remainder once flush is complete in Spring 2023.



RVP 57G Knolton 2K - Son

LOT  
1



Glenlees AXA Evolve ET 112J - Service Sire





2

RVP 018 Knight 4K

Polled RVP 4K

January 1, 2022

MALE  
C03094608

BR BELLE AIR 6011  
BAR STAR FRESH PRINCE 018 ET (DLF HYF IEF MSUDF MDF) P A44163502  
BAR STAR 91X WHATAGIRL 410

CHEZ/PUGH/HARA LOGIC 8815F ET  
MF 1306 HUDSON 8815F 204H P C03090981  
MF 308N ANNETTE 1306 ET

BAR S LHF 028 240  
BR BELLE 4082 ET  
STAR STROKE O'GENIUS 91X ET  
MOHICAN WHATAGIRL 6Y  
CRR 719 CATAPULT 109  
R SWEET RED WINE 039  
NJW 73S M326 TRUST 100W ET  
MF 62J NATALIE 122L 308N

EPD's

CE: 1.9

BW: 4.5

WW: 64.5

YW: 104.3

M: 32.5

TM: 64.8

- Birth Weight: 93 lbs. unassisted.
- Ranks in the top 12% of the breed for Milk and the top 20% of the breed for Yearling Weight.
- The proof is in the picture, a great look to this herd sire candidate.







LOT  
3

3

**RVP 203D Kruz 5K**

Polled

RVP 5K

January 3, 2022

MALE

C03094609

NJW 135U 10Y HOMETOWN 27A  
NJW 76S 27A LONG RANGE 203D ET (DLF HYF IEF MSUDF MDF) P C03070970  
NJW 55N STARDUST 76S

RVP 9050 ARCHITECT 46A  
RVP 46A MISS FASHION 15F P C03045581  
AXA X51 MISS WONDER 513D

NJW 73S W18 HOMETOWN 10Y ET  
NJW 4037 34S DURANGO VACA 135U  
NJW BW TRAILDUST 161L  
NJW 57G SPIRIT QUEEN 55N ET  
BOYD WORLDWIDE 9050 ET  
RVP RCY 100W YE HAW 130Y  
KCF BENNETT REVOLUTION X51  
AXA W18 MISS WONDER ET 703B

- Birth Weight: 87 lbs. unassisted.
- Ranks in the top 17% of the breed for Milk.
- Sired by the 2018 NILE Supreme Champion Bull. Long Range stamps them with volume and pigment.

EPD's

CE: 4.6

BW: 2.1

WW: 63.8

YW: 101.7

M: 29.8

TM: 61.7



NJW 76S 27A Long Range 203D ET - Sire



RVP 9050 Architect 46A - Sire of Dam



# KNOWLEDGE...



- Birth Weight: 86 lbs. unassisted
- Ranks in the top 5% of the breed for weaning weight, top 8% for carcass weight, top 9% for yearling weight, top 10% for total maternal and the top 12% for rib-eye area
- "Knowledge" puts the niceties and the necessities in one package. . . . muscle, style, correctness, pigmentation, short marked with plenty of testicle development.
- For those who are looking for a sire prospect that has strong numbers and extra performance. . . look right here!



4	MF 9D Georgia 119D 906G {MDF}	FEMALE C03067361	4A	RVP 57G Knowledge 6K	MALE C03094606
Polled	906G	March 11, 2019	Polled	RVP 6K	January 3, 2022
RVP W18 DIRECTION ET 119D {DLF HYF IEF MSUDF MDF} P C03025919	SHF WONDER M326 W18 ET STAR ROSE GARDON 13X ET	KCF BENNETT 3008 M326 SHF GOVERNESS 236G L37 REMITALL ONLINE 122L GERBER 774 ROSY LANE 623S	NJW 11B 6589 AUTHORITY 57G ET {DLF HYF IEF MSUDF} P C03079615	/S MANDATE 66589 ET NJW 79Z 10W RITA 11B	R LEADER 6964 /S LADY DOMINO 0158X LJR 023R WHITMORE 10W BW 91H 100W RITA 79Z ET
RVP 100W DARLING 9D P C03077815	NJW 73S M326 TRUST 100W ET DOSS FISHIN IN THE DARK DH28	KCF BENNETT 3008 M326 NJW P606 72N DAYDREAM 73S MSJ XEROX 20X FTF CLASSY LADY 621S	MF 9D GEORGIA 119D 906G {DLF HYF IEF MSUDF MDF} P C03067361	RVP W18 DIRECTION ET 119D RVP 100W DARLING 9D	SHF WONDER M326 W18 ET STAR ROSE GARDON 13X ET NJW 73S M326 TRUST 100W ET DOSS FISHIN IN THE DARK DH28
EPD's	CE: 7.7	BW: 3	EPD's	CE: 5.8	YW: 105.6
	WW: 59.8	M: 27.4		BW: 1.8	M: 29.6
	YW: 95.8	TM: 57.3		WW: 68	TM: 63.3



- Ranks in the top 8% of the breed for fat, top 10% for MCE and top 15% for calving ease
- Awesome profiling three-year old . . . great udder with small teats, lots of chest and barrel, short marked and plenty of eye pigment. Genetically strong with two national champions through "Trust" and "Online" and two top donors through "Daydream" and "Gardon"
- A maternal sister was selected by Lamb Bros Beef and her mother, 9D, is now working for McDonald Farm
- A.I. bred to NJW 76S 27A Long Range 203D ET on April 1, 2022 then exposed to RVP 252F Justified 30J after June 15, 2022. Preg checked safe to A.I. service.





- Birth Weight: 76 lbs. unassisted
- Ranks in the top 5% of the breed for birth weight and rib-eye and the top 15% for calving ease
- This powerhouse sire prospect is genetically unique... a brother to sister mating by the great breeding giant NJW 160B 028X Historic 81E ET who is a trait leader for calving ease, birth weight, milk, total maternal, rib-eye and marbling. This youngster came to us with a mere 76 lb. birth and has developed into a long-sided, muscled herd bull prospect and just out of a first calver. Here's an outstanding opportunity!



NJW 160B 028X Historic 81E ET - Sire

LOT  
5A

5

**SSF 432B Hope Historic 416**

Polled

J416

January 4, 2020

FEMALE  
C03079592

CHURCHILL SENSATION 028X  
NJW 160B 028X HISTORIC 81E ET (DLF HYF IEF MSUDF MDF) P C03072832  
NJW 73S 38W DAYDREAM 160B

BOYD MASTERPIECE 0220  
MOHICAN MARIATT 423B P A43490843  
TH 223 71I DOMINETTE 404X ET

UPS DOMINO 3027  
CHURCHILL LADY 7202T ET  
NJW 76S P20 BEEF 38W ET  
NJW P606 72N DAYDREAM 73S  
SHF RIB EYE M326 R117  
SSF P606 MS VICTOR 803  
DRF JWR PRINCE VICTOR 71I  
KBCR 19D DOMINETTE 223

EPD's CE: 5.1 BW: 0.9 WW: 48.4 YW: 78.4 M: 24.3 TM: 48.5

5A

**RVP 81E History 7K**

Polled

RVP 7K

January 4, 2022

MALE  
C03094605

CHURCHILL SENSATION 028X  
NJW 160B 028X HISTORIC 81E ET (DLF HYF IEF MSUDF MDF) P C03072832  
NJW 73S 38W DAYDREAM 160B

NJW 160B 028X HISTORIC 81E ET  
SSF 432B HOPE HISTORIC 416 P C03079592  
MOHICAN MARIATT 423B

UPS DOMINO 3027  
CHURCHILL LADY 7202T ET  
NJW 76S P20 BEEF 38W ET  
NJW P606 72N DAYDREAM 73S  
CHURCHILL SENSATION 028X  
NJW 73S 38W DAYDREAM 160B  
BOYD MASTERPIECE 0220  
TH 223 71I DOMINETTE 404X ET

EPD's CE: 7.7 BW: -0.3 WW: 49.1 YW: 77.3 M: 29.7 TM: 54.3

- Ranks in the top 12% of the breed for birth weight
- An outstanding two-year old first calver... Deep bodied, sharp fronted with a nice udder
- Highly maternal with a great future... just check her report card at side
- Natural service to NJW 11B 6589 Authority 57G on May 5, 2022 then exposed to RVP 252F Justified 30J after June 15, 2022. Preg checked safe to 57G service

LOT  
5





**LOT  
6**

**6**

**RVP 57G Kelly 32K**

Polled RVP 32K

January 11, 2022

**FEMALE**

C03091922

/S MANDATE 66589 ET  
**NJW 11B 6589 AUTHORITY 57G ET (DLF HYF IEF MSUDF) P C03079615**  
 NJW 79Z 10W RITA 11B

TH 113W 11X HI-TECH 17A  
**MHPH 17A NITA 1161D (DLF HYF IEF MSUDF) P C03022416**  
 MHPH MS 2N NITA 107T

R LEADER 6964  
 /S LADY DOMINO 0158X  
 LJR 023R WHITMORE 10W  
 BW 91H 100W RITA 79Z ET  
 TH 71U 719T MR HEREFORD 11X  
 TH 105S 755T GEMINI 113W  
 WILGOR 55K NORTHEASTERN OL 2N  
 MHPH MS 68M NITA 112R

- Ranks in the top 14% of the breed for calving ease and carcass weight and top 20% for yearling weight
- Birth Weight: 78 lbs.
- Out of the great "Nita" cow family at Medonte Highlands, this fancy prospect is full of style and predictability
- A maternal sister, Nita 1015F, was selected by Remital-West, Olds and JK Fraser Cattle, Cochrane, Alberta

**EPD's** CE: 7.8 BW: 1.5 WW: 60.9 YW: 99.5 M: 27.4 TM: 57.9



NJW 11B 6589 Authority 57G - Sire

## Junior's Incentive Draw



### How to enter:

Register online at [www.rivervalleyherefords.com](http://www.rivervalleyherefords.com) until 3:00 pm sale day. If you are attending in person, you can register at the sale until 5:30 pm.

### What you can win:

First winner receives a \$500.00 sale credit  
 Second winner receives a \$250.00 sale credit  
 Winners will be announced at the start of the sale.

**May only register ONCE. Sale credit must be used at this year's sale.**

We encourage you to register early for your chance to win.



## KAYO AND MAJESTIC KATIE...

- Ranks in the top 10% of the breed for calving ease, milk and total maternal, top 18% for carcass weight and the top 20% for weaning weight
- Birth Weight: 81 lbs.
- A maternal sister, RVP 100W Jubilant 23J, was selected by Chevalier Polled Herefords, Swan Lake, Manitoba



LOT  
7

### 7 RVP 252F Kayo 82K

Polled

RVP 82K

February 10, 2022

FEMALE  
C03091942

NJW 160Z 10W WHIT 33B  
NJW 79Z 33B FORWARD 252F (DLF HYF IEF MSUDF MDF) P C03065970  
BW 91H 100W RITA 79Z ET

HARVIE DAN SNIPER 203Z  
E 203Z FAITH D55 (DLF HYF IEF MSUDF) P C03043252  
E T719 LADY BRAXTON A036

LJR 023R WHITMORE 10W  
NJW 73S 88X DAYDREAM 160Z  
NJW 73S M326 TRUST 100W ET  
REMITALL RITA 91H  
TH 122 71I VICTOR 719T  
HARVIE DAN MS FIREFLY 69S  
E BRAXTON 719  
E 196T SANDI Y342

EPD's CE: 8.2 BW: 2.2 WW: 61.8 YW: 94.5 M: 33.2 TM: 64.1

### 8 RVP 11B Majestic Katie 17K

Polled

RVP 17K

January 6, 2022

FEMALE  
C03091912

NJW 98S R117 RIBEYE 88X ET  
LCX PERFECTO 11B ET (DLF HYF IEF MSUDF) P C03081328  
WLL ZOXY 3Z

GHC SCHWARZKOPF 125E  
AIRRIESS-ACRES MAJESTIC 20H (DLF HYF IEF MSUDF) P C03070414  
SQUARE-D LUCIE 214D

SHF RIB EYE M326 R117  
NJW 9126J DEW DOMINO 98S  
TH 122 71I VICTOR 719T  
WLL VENUS 19X  
SHF CANNON Z210 C95  
GHC MISS GALAXY ET 208Z  
NJW 51U 4037 DURAMAX 8X  
SQUARE-D HOLLY 341S

EPD's CE: 5.4 BW: 0.7 WW: 58.1 YW: 85.4 M: 34.6 TM: 63.7

- Ranks in the top 8% of the breed for milk, top 10% for total maternal and 12% for birth weight
- Birth Weight: 67 lbs.
- An exciting combination of attractive profile with calving ease and very high maternal values



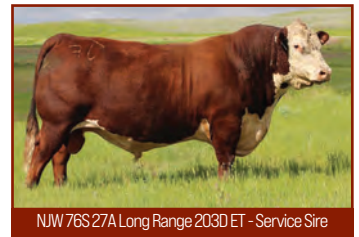
LOT  
8



## HYACINTH AND KAYDANCE...



- Ranks in the top 10% of the breed for yearling weight, top 15% for rib-eye and top 18% for weaning weight
- A daughter of the rapidly growing legend "Trust" and the proof stands right beside her!
- A.I. bred to NJW 76S 27A Long Range 203D on April 15, 2022 then exposed to NJW 79Z 199B Cowboss 113H ET after June 15, 2022. Preg checked safe to A.I. service



NJW 76S 27A Long Range 203D ET - Service Sire

**9** **RVP 100W Hyacinth 78H**  
 Polled RVP 78H January 25, 2020 FEMALE C03069850

KCF BENNETT 3008 M326  
 NJW 73S M326 TRUST 100W ET (DLF HYF IEF MSUDF MDF) P C02938213  
 NJW P606 72N DAYDREAM 73S

TH 22R 16S LAMBEAU 17Y  
 SHADY-BIRCH DAYLILY 150 (DLF HYF IEF MSUDF) P C03018269  
 ELZEVR DD SHE DEVIL 402B

RRH MR FELT 3008  
 KCF MISS 459 F284  
 PW VICTOR BOOMER P606  
 NJW 94J DEW 72N

TH 121L 63N TUNDRA 16S  
 TH 62N 3L KELSEY 22R  
 MSU TCF REVOLUTION 4R  
 ELZEVR BT DARE DEVIL 207Z

**EPD's** CE: 5.9 BW: 2.3 WW: 61.9 YW: 104.1 M: 27.1 TM: 58.1

**9A** **RVP 6153 Kaydance 31K**  
 Polled RVP 31K January 11, 2022 FEMALE C03091921

R LEADER 6964  
 BOYD 31Z BLUEPRINT 6153 (DLF HYF IEF MSUDF MDF) P C03053820  
 NJW 91H 100W RITA 31Z ET

NJW 73S M326 TRUST 100W ET  
 RVP 100W HYACINTH 78H P C03069850  
 SHADY-BIRCH DAYLILY 150

HYALITE ON TARGET 936  
 R MISS REVOLUTION 1009  
 NJW 73S M326 TRUST 100W ET  
 REMITALL RITA 91H

KCF BENNETT 3008 M326  
 NJW P606 72N DAYDREAM 73S  
 TH 22R 16S LAMBEAU 17Y  
 ELZEVR DD SHE DEVIL 402B

**EPD's** CE: 6.3 BW: 2.7 WW: 64.8 YW: 104.1 M: 28.7 TM: 61.1



- Ranks in the top 10% of the breed for weaning and yearling weight and the top 20% for calving ease
- Birth Weight: 80 lbs.
- A daughter of the calving ease and maternal sire "Blueprint"
- Fancy and complete from all angles... extreme body length, pigment and might possibly use a halter



# PATRICIA AND PATTY KAKE...

- Ranks in the top 2% of the breed for yearling weight and total maternal, top 5% for weaning weight and the top 8% for milk
- Strong, hard-working two-year-old with a well structured udder, sharp fronted and length of spine
- She comes to you with extremely high performance data
- A.I. bred to NJW 11B 6589 Authority 57G on April 8, 2022 then exposed to NJW 79Z 199B Cowboss 113H ET after June 15, 2022. Preg checked safe to the A.I. service



NJW 11B 6589 Authority 57G - Service Sire



LOT  
10

10

## GLENLEES BNC 6C Patricia 67H

Polled

AHL 67H

February 27, 2020

FEMALE

C03073571

NJW FHF 9710 TANK 45P  
BLAIR'S 45P 33W SOUTHPAW ET 6C (DLF HYF IEF MSUDF) P C03013805  
HAROLDSON'S TEMPTRESS T100 33W

BIRD'S-HILL VEGAS 3U  
BNC 3U PATRICIA 317Z P C02967477  
GF 29F MORNING GIRL ET 110R

FHF 8403 STARBUCK 19H  
GV 579 VICTORIA 9710  
SHF TAHOE R117 T100  
HAROLDSON'S TEMPTRESS 13P 25S  
REMITALL SUPER DUTY 42S  
GF 4L MELISSA 222P  
CS BOOMER 29F  
BARRONS 2Z BLOSSOM ET 1L

10A

## RVP 174E Patty Kake 26K

Polled

RVP 26K

January 9, 2022

FEMALE

C03091917

TH 403A 475Z PIONEER 358C ET  
TH FRONTIER 174E (DLF HYF IEF MSUDF MDF) P C03065148  
FTF TRUSTING LADY 312A

BLAIR'S 45P 33W SOUTHPAW ET 6C  
GLENLEES BNC 6C PATRICIA 67H P C03073571  
BNC 3U PATRICIA 317Z

TH 89T 755T STOCKMAN 475Z  
TH 71U 17Y RITA 403A  
NJW 73S M326 TRUST 100W ET  
FTF BOOM AND BLOOM 8211U  
NJW FHF 9710 TANK 45P  
HAROLDSON'S TEMPTRESS T100 33W  
BIRD'S-HILL VEGAS 3U  
GF 29F MORNING GIRL ET 110R

EPD's

CE: -5.3

BW: 5.4

WW: 56.1

YW: 94.1

M: 25.0

TM: 53.1

EPD's

CE: -1.1

BW: 4.2

WW: 68.3

YW: 115

M: 34.9

TM: 69.1

- Ranks in the top 3% of the breed for yearling weight and total maternal, top 5% for weaning weight and top 8% for milk
- Birth Weight: 84 lbs.
- Like mother, like daughter



LOT  
10A



## PRETTY THING AND PRETTY KATIE...



- Ranks in the top 8% of the breed for fat and the top 16% for rib-eye area
- This first calver comes to you with lots of body and mass... short marked, stylish and attractive
- Don't overlook her Historic daughter at foot
- A.I. bred to NJW 11B 6589 Authority 57G ET on April 1, 2022 then exposed to NJW 79Z 199B Cowboss 113H ET after June 15, 2022. Preg checked safe to the A.I. service



NJW 11B 6589 Authority 57G - Service Sire

### 11 GOBLE Pretty Thing 302H

Polled

BJG 302H

March 1, 2020

FEMALE  
C03079597

NJW 73S M326 TRUST 100W ET  
RVP 100W DUKE 31D (DLF HYF IEF MSUDF) P C03018492  
SRF AFFECTION 138A

GCC JPF EXCITER A222  
GOBLE SANDY 406C P A43622285  
RM GKT STOCKER 338

KCF BENNETT 3008 M326  
NJW P606 72N DAYDREAM 73S  
MSU TCF REVOLUTION 4R  
BYEVISTA 138 WARDEN 138Y  
LAKE 002 KILOWATTS 104S  
JPF K01 HONEY U30  
GOBLE KILLIN TIME 209X  
NPH 10H MS STOCKER 11R

EPD's CE: 0.8 BW: 2.8 WW: 51.2 YW: 86.5 M: 24.2 TM: 49.8

### 11A RVP 81E Pretty Katie 34K

Polled

RVP 34K

January 12, 2022

FEMALE  
C03091923

CHURCHILL SENSATION 028X  
NJW 160B 028X HISTORIC 81E ET (DLF HYF IEF MSUDF MDF) P C03072832  
NJW 73S 38W DAYDREAM 160B

RVP 100W DUKE 31D  
GOBLE PRETTY THING 302H P C03079597  
GOBLE SANDY 406C

UPS DOMINO 3027  
CHURCHILL LADY 7202T ET  
NJW 76S P20 BEEF 38W ET  
NJW P606 72N DAYDREAM 73S  
NJW 73S M326 TRUST 100W ET  
SRF AFFECTION 138A  
GCC JPF EXCITER A222  
RM GKT STOCKER 338

EPD's CE: 5.5 BW: 0.4 WW: 50.0 YW: 80.6 M: 29.6 TM: 54.6



- Ranks in the top 4% of the breed for rib-eye and the top 10% for birth weight
- Birth Weight: 69 lbs.



- Ranks in the top 4% of the breed for fat, top 6% rib-eye, top 15% maternal calving ease, top 16% total maternal, top 18% carcass weight and the top 20% for milk
- One can never have too many "Trust" daughters walking in your pasture. The "Cybil" female is deep chested, easy keeping and a tank of a three-year-old!
- A.I. bred to Innisfail WHR X651/723 ET 4013 on April 8, 2022 then exposed to NJW 79Z 199B Cowboss 113H ET after June 15, 2022. Preg checked safe to A.I. service



LOT  
12

## 12 LFF 1604 100W Trust Cybil 1910

Polled

1910

January 23, 2019

FEMALE  
C03079520

KCF BENNETT 3008 M326  
NJW 73S M326 TRUST 100W ET (DLF HYF IEF MSUDF MDF) P C02938213  
NJW P606 72N DAYDREAM 73S

GOBLE CATEGORY 5 322Z  
LFF HURRICANE CYBIL 2 1604 P A43673307  
TJL BARBIE 1419

RRH MR FELT 3008  
KCF MISS 459 F284  
PW VICTOR BOOMER P606  
NJW 94J DEW 72N  
CS BOOMER 29F  
STAR MKS WESTERN PEACH 133R ET  
GOBLE HOMETOWN 213X  
BOOT HILL STAR BARBIE 601

## 12A RVP 203D Keen 65K

Polled

RVP 65K

February 1, 2022

FEMALE  
C03092578

NJW 135U 10Y HOMETOWN 27A  
NJW 76S 27A LONG RANGE 203D ET (DLF HYF IEF MSUDF MDF) P C03070970  
NJW 55N STARDUST 76S

NJW 73S M326 TRUST 100W ET  
LFF 1604 100W TRUST CYBIL 1910 P C03079520  
LFF HURRICANE CYBIL 2 1604

NJW 73S W18 HOMETOWN 10Y ET  
NJW 4037 34S DURANGO VACA 135U  
NJW BW TRAILDUST 161L  
NJW 57G SPIRIT QUEEN 55N ET  
KCF BENNETT 3008 M326  
NJW P606 72N DAYDREAM 73S  
GOBLE CATEGORY 5 322Z  
TJL BARBIE 1419

EPD's CE: 1.9 BW: 3.7 WW: 60.2 YW: 102.1 M: 31.3 TM: 61.4

EPD's CE: -2.1 BW: 5 WW: 68 YW: 113.6 M: 33.6 TM: 67.6

- Ranks in the top 3% of the breed for yearling weight, top 5% for total maternal, top 6% for weaning weight, top 10% for milk and top 18% for rib-eye
- Birth Weight: 93 lbs.
- This Long Range daughter will add performance minded values to your program



LOT  
12A



## DURANNA AND KITE...



- Ranks in the top 4% of the breed for milk and total maternal, top 9% for weaning weight top 12% for yearling weight, top 18% for fat and top 19% for rib-eye area
- Her maternal sister, RVP 81E Jade 25J was selected by Haroldson's Polled Herefords, Wawota, Saskatchewan
- Short marked, neat udder with capacity and substance
- A.I. bred to NJW M326 Trust 100W ET on March 24, 2022 then exposed to NJW 79Z 199B Cowboss 113H ET after June 15, 2022. Preg checked safe to A.I. service



NJW M326 Trust 100W ET - Service Sire

**13 KH JLCS 72C Duranna C38 G17**  
 Polled G17 February 13, 2019 FEMALE C03067354

NJW 67U 28M BIG MAX 22Z  
 NJW 79Z 22Z HEAVY DUTY 72C ET {DLF HYF IEF MSUDF MDF} P C03039849  
 BW 91H 100W RITA 79Z ET

MSU TCF REVOLUTION 4R  
 JLCS 4R DURANNA 9438 C38 ET {DLF HYF IEF MSUDF} P A43662830  
 THM 4037 DURANNA 9438

GOLDEN-OAK 4J MAXIMUM 28M  
 NJW 4037 80L FAITH 67U  
 NJW 73S M326 TRUST 100W ET  
 REMITALL RITA 91H

FELTONS LEGEND 242  
 MSU TCF RACHAEL ET 54N  
 THM DURANGO 4037  
 WILL-VIA MS VICKY N-72

**EPD's** CE: 2 BW: 3.2 WW: 65.5 YW: 102.3 M: 37.3 TM: 70.1

**13A RVP 4013 Kite 80K**  
 Polled RVP 80K February 9, 2022 FEMALE C03091941

EFBEEF TFL U208 TESTED X651 ET  
 INNISFAIL WHR X651/723 4013 ET {DLF HYF IEF MSUDF MDF} P C03054441  
 INNISFAIL P230 T723

NJW 79Z 22Z HEAVY DUTY 72C ET  
 KH JLCS 72C DURANNA C38 G17 {DLF HYF IEF MSUDF} P C03067354  
 JLCS 4R DURANNA 9438 C38 ET

EFBEEF FOREMOST U208  
 EFBEEF P606 MABEL R415  
 EF F745 FRANK P230  
 INNISFAIL 235 R501 ET

NJW 67U 28M BIG MAX 22Z  
 BW 91H 100W RITA 79Z ET  
 MSU TCF REVOLUTION 4R  
 THM 4037 DURANNA 9438

**EPD's** CE: 4.9 BW: 3.0 WW: 67.6 YW: 108.4 M: 35.5 TM: 69.3



- Ranks in the top 1% of the breed for marbling, top 2% for total maternal, top 5% for weaning weight and milk and top 7% for weaning weight
- Birth Weight: 82 lbs.
- Amazing numbers by a sire who is a trait leader in eight categories



- Ranks in the top 18% of the breed for fat
- Short marked, moderate in frame size in her prime with an excellent daughter at side
- A.I. bred to NJW M326 Trust 100W ET on March 27, 2022 then exposed to NJW 79Z 199B Cowboss 113H ET after June 15, 2022. Preg checked safe to A.I. service



LOT  
14

## 14 THM 3097 Bee 9121

Polled THM 9121

October 22, 2018

FEMALE  
C03064569

TH 122 711 VICTOR 719T  
THM 719T FORMIDABLE 3097 (DLF HYF IEF MSUDF) P A43404245  
THM EASY MAY 7532

RVP 743 ZANDER 28Z  
RVP 28Z BEHOLD 126B (DLF HYF IEF) P C02993156  
GLENVIEW 4R MARVEL Z8

DRF JWR PRINCE VICTOR 711  
KBCR 19D DOMINETTE 122  
NJB 218 EASY DOMINO ET  
THM MAGGIE MAY 5070 ET  
CRR ABOUT TIME 743  
DORBY MISS CATALINA 406X  
MSU TCF REVOLUTION 4R  
GLENVIEW 6056 MARVEL X2 ET

## 14A RVP 100W Be Kind 40K

Polled RVP 40K

January 17, 2022

FEMALE  
C03091926

KCF BENNETT 3008 M326  
NJW 73S M326 TRUST 100W ET (DLF HYF IEF MSUDF MDF) P C02938213  
NJW P606 72N DAYDREAM 73S

THM 719T FORMIDABLE 3097  
THM 3097 BEE 9121 P C03064569  
RVP 28Z BEHOLD 126B

RRH MR FELT 3008  
KCF MISS 459 F284  
PW VICTOR BOOMER P606  
NJW 94J DEW 72N  
TH 122 711 VICTOR 719T  
THM EASY MAY 7532  
RVP 743 ZANDER 28Z  
GLENVIEW 4R MARVEL Z8

EPD's CE: 1 BW: 2.3 WW: 56.2 YW: 81.4 M: 25.0 TM: 53.1

EPD's CE: -2.2 BW: 4.3 WW: 64.5 YW: 104 M: 30 TM: 62.3

- Ranks in the top 1% of the breed for fat, top 11% for weaning weight, yearling weight and rib-eye and top 16% for total maternal
- Birth Weight: 92 lbs.
- This "Trust" daughter is brood cow material



LOT  
14A



# GOTTA BE GOOD AND GOTTA BE KIND...



- Ranks in the top 1% of the breed for fat, top 8% for rib-eye, top 10% for carcass weight and the top 18% for maternal calving ease
- Maternal sisters to 19G have been selected by NLCL Cattle Co., Bill and Jacob Ball and Boyd Beef Cattle, Mayslick, Kentucky
- A.I. bred to NJW 76S 27A Long Range 203D ET on May 27, 2022 then exposed to NJW 79Z 199B Cowboss 113H ET after June 15, 2022. Preg checked safe to A.I. service



**15 RVP 100W Gotta Be Good 19G**  
 Polled RVP 19G January 6, 2019 FEMALE C03057999

KCF BENNETT 3008 M326  
 NJW 73S M326 TRUST 100W ET {DLF HYF IEF MSUDF MDF} P C02938213  
 NJW P606 72N DAYDREAM 73S

GO 3196 ADVANCE S109  
 STAR JJB GOTTA BE ME 169X P C02950172  
 STAR JJB JILLIAN 98U ET

RRH MR FELT 3008  
 KCF MISS 459 F284  
 PW VICTOR BOOMER P606  
 NJW 94J DEW 72N  
 HH ADVANCE 3196N  
 GO MS L18 EXCEL N89  
 REMITALL ONLINE 122L  
 STAR JUDY HCF 322J

**EPD's** CE: 5 BW: 3.2 WW: 59.5 YW: 99.1 M: 27.6 TM: 57.3

**15A RVP 4013 Gotta Be Kind 61K**  
 Polled RVP 61K January 29, 2022 FEMALE C03091933

EFBEEF TFL U208 TESTED X651 ET  
 INNISFAIL WHR X651/723 4013 ET {DLF HYF IEF MSUDF MDF} P C03054441  
 INNISFAIL P230 T723

NJW 73S M326 TRUST 100W ET  
 RVP 100W GOTTA BE GOOD 19G P C03057999  
 STAR JJB GOTTA BE ME 169X

EFBEEF FOREMOST U208  
 EFBEEF P606 MABEL R415  
 EF F745 FRANK P230  
 INNISFAIL 235 R501 ET  
 KCF BENNETT 3008 M326  
 NJW P606 72N DAYDREAM 73S  
 GO 3196 ADVANCE S109  
 STAR JJB JILLIAN 98U ET

**EPD's** CE: -0.6 BW: 5.2 WW: 75 YW: 122.3 M: 27 TM: 64.5



- Ranks in the top 1% of the breed for weaning and yearling weight, the top 4% for marbling, top 8% for carcass weight and the top 10% for total maternal
- Birth Weight: 91 lbs.
- This daughter, by the performance trait leader "Innisfail", is front pasture material



- Ranks in the top 9% of the breed for maternal calving ease and top 18% for fat
- A maternal sister to 136, is working at Corp Creek Polled Herefords, Omeme and the mother, "Crimson 38E" was purchased by Daniel Porter, Tweed, Ontario
- A.I. bred to NJW 11B 6589 Authority 57G on April 8, 2022 then exposed to NJW 79Z 199B Cowboss 113H ET after June 15, 2022. Preg checked safe to the A.I. service



NJW 11B 6589 Authority 57G - Service Sire



LOT  
16

16

## SHADY-BIRCH Gaillardia 136

Polled

LSH 136

February 13, 2019

FEMALE  
C03057019

NJW 76S 4037 DURANGO SPIRIT 174X  
NJW 103Y 174X DIABLO 156C ET (DLF HYF IEF MSUDF) P C03026212  
NJW 101U 100W SPIRITQUEEN103Y

TH 809T 14Z PLAYMAKER 80B  
GLENLEES DK 80B CRIMSON 38E P C03035820  
GRH 7X CRIMSON 6Z

THM DURANGO 4037  
NJW 55N STARDUST 76S  
NJW 73S M326 TRUST 100W ET  
NJW 4037 55N FREE SPIRIT 101U  
TH 512X 719T PLAYMAKER 14Z  
TH 217E 57G MAGGIE 809T ET  
GRH DK 50S GLOBE 7X  
GRH 19N LAURA 34R

16A

## RVP 100W Kazoo 64K

Polled

RVP 64K

February 1, 2022

FEMALE  
C03091934

KCF BENNETT 3008 M326  
NJW 73S M326 TRUST 100W ET (DLF HYF IEF MSUDF MDF) P C02938213  
NJW P606 72N DAYDREAM 73S

NJW 103Y 174X DIABLO 156C ET  
SHADY-BIRCH GAILLARDIA 136 P C03057019  
GLENLEES DK 80B CRIMSON 38E

RRH MR FELT 3008  
KCF MISS 459 F284  
PW VICTOR BOOMER P606  
NJW 94J DEW 72N  
NJW 76S 4037 DURANGO SPIRIT 174X  
NJW 101U 100W SPIRITQUEEN103Y  
TH 809T 14Z PLAYMAKER 80B  
GRH 7X CRIMSON 6Z

EPD's

CE: 0

BW: 2.8

WW: 50.6

YW: 84.4

M: 24.5

TM: 49.8

EPD's

CE: 0.3

BW: 3.4

WW: 58.8

YW: 100.6

M: 29.8

TM: 59.2

- Ranks in the top 4% of the breed for fat, top 10% for rib-eye and the top 18% for yearling weight
- Birth Weight: 83 lbs.
- This sweet, chisel-fronted "Trust" daughter comes to us long sided, pigmented and short marked. She might be a halter candidate.



LOT  
16A



## LIBBY AND KERCHIEF...



- Ranks in the top 5% of the breed for marbling, the top 10% for maternal calving ease and the top 18% for yearling weight
- A pure tank of a brood cow... depth of chest and body, easy fleshing and a well-formed udder
- Her mother, Libby 128A, is a donor sired by the Agribition Champion, BNMHPH 13P Heat 101S
- A.I. bred to NJW M326 Trust 100W ET on March 24, 2022 then exposed to NJW 79Z 199B Cowboss 113H ET after June 15, 2022. Preg checked safe to A.I. service



NJW M326 Trust 100W ET - Service Sire

17	PCL Z311 Libby ET 79F	March 26, 2018	FEMALE C03047503	17A	RVP 100W Kerchief 83K	February 12, 2022	FEMALE C03091943
	Polled DAWM 79F				Polled RVP 83K		
	SCHU-LAR ON TARGET 22S KCF BENNETT ENCORE Z311 ET (DLF HYF IEF MSUDF) P C03016493 KCF MISS REVOLUTION X338 ET	SCHU-LAR 5N OF 9L 3008 SCHU-LAR 208 OF 1H 121 ET MSU TCF REVOLUTION 4R JW 718 VICTORIA 9106		KCF BENNETT 3008 M326 NJW 73S M326 TRUST 100W ET (DLF HYF IEF MSUDF MDF) P C02938213 NJW P606 72N DAYDREAM 73S		RRH MR FELT 3008 KCF MISS 459 F284 PW VICTOR BOOMER P606 NJW 94J DEW 72N	
	BNMHPH 13P HEAT 101S MHPH 101S LIBBY 128A (DLF HYF IEF MSUDF) P C02982773 WTK ANL 3N LIBBY 136T	REMITALL PATRIOT ET 13P ANL PBG 29F BONNIE 21P ANL SBS 122L CATTLELAC 3N WTK ANL 705G LIBBY 114P		KCF BENNETT ENCORE Z311 ET PCL Z311 LIBBY ET 79F (DLF HYF IEF MSUDF) P C03047503 MHPH 101S LIBBY 128A		SCHU-LAR ON TARGET 22S KCF MISS REVOLUTION X338 ET BNMHPH 13P HEAT 101S WTK ANL 3N LIBBY 136T	
EPD's	CE: 1 BW: 3.1 WW: 58.6 YW: 100.2 M: 28.1 TM: 57.4			EPD's	CE: 1.1 BW: 2.7 WW: 60.7 YW: 104.8 M: 31.6 TM: 62		



- Ranks in the top 10% of the breed for yearling weight, the top 12% for marbling, top 15% for milk, top 16% for total maternal and the top 18% for fat
- Birth Weight: 82 lbs.
- Just a February born "Trust" daughter with a birth mark. Don't overlook this prospect because of her age... this is a genetically packed power heifer!



- Ranks in the top 15% of the breed for calving ease and the top 18% for birth weight
- Her mother, "Wendy 2D" was selected by Leonard and Winston Allen, Oxford, Nova Scotia
- This tank of a two year old is a producer... check out what is with her at foot
- A.I. bred to NJW 11B 6589 Authority 57G on April 1, 2022 then exposed to NJW 79Z 199B Cowboss 113H ET after June 15, 2022. Preg checked safe to the A.I. service



NJW 11B 6589 Authority 57G - Service Sire



LOT  
18

18

## RVP 4040 RIVERVALLEY Wendy 40H

Polled

RVP 40H

January 11, 2020

FEMALE

C03069836

TH 22R 16S LAMBEAU 17Y  
BOYD FT KNOX 17Y XZ5 4040 {DLF HYF IEF MSUDF MDF} P C03045770  
DOSS MY EYES ADORE U DHZ5

NJW 73S W18 DOWNHOME 21ZET  
STONEWOOD WENDY 2D {DLF HYF IEF MSUDF MDF} P C03018584  
DALMUIR WENDY 129T

TH 121L 63N TUNDRA 16S  
TH 62N 3L KELSEY 22R  
BOYD WORLDWIDE 9050 ET  
DHF COVER GIRL C902  
SHF WONDER M326 W18 ET  
NJW P606 72N DAYDREAM 73S  
DR WORLD CLASS 517 10H  
DALMUIR WENDY 110N

EPD's

CE: 7.8

BW: 1.2

WW: 57.7

YW: 91.3

M: 27.2

TM: 56.1

18A

## RVP 6153 RIVERVALLEY Kay 59K

Polled

RVP 59K

January 29, 2022

FEMALE

C03091931

R LEADER 6964  
BOYD 31Z BLUEPRINT 6153 {DLF HYF IEF MSUDF MDF} P C03053820  
NJW 91H 100W RITA 31Z ET

BOYD FT KNOX 17Y XZ5 4040  
RVP 4040 RIVERVALLEY WENDY 40H P C03069836  
STONEWOOD WENDY 2D

HYALITE ON TARGET 936  
R MISS REVOLUTION 1009  
NJW 73S M326 TRUST 100W ET  
REMITALL RITA 91H  
TH 22R 16S LAMBEAU 17Y  
DOSS MY EYES ADORE U DHZ5  
NJW 73S W18 DOWNHOME 21ZET  
DALMUIR WENDY 129T

EPD's

CE: 8.9

BW: 1.3

WW: 60.3

YW: 93.7

M: 28.7

TM: 58.9

- Ranks in the top 9% of the breed for calving ease, top 18% for birth weight and the top 20% for maternal calving ease
- Birth Weight: 74 lbs.
- This Blueprint daughter features calving advantages and style. Pigmented, long-sided with loads of capacity



LOT  
18A



# GENUINE AND KNOCK OUT..

## SELLING CHOICE - LOTS 19 AND 19A



LOT  
19

- Ranks in the top 1% of the breed for rib-eye, top 3% for fat and top 9% for carcass weight
- Moderate, fleshy two year old with great carcass data
- A.I. bred to NJW 76S 27A Long Range 203D ET on April 1, 2022 then exposed to NJW 79Z 199B Cowboss 113H ET after June 15, 2022. Preg checked safe to A.I. service



NJW 76S 27A Long Range 203D ET - Service Sire

**19 RVP 100W Genuine 40G**  
 Polled RVP 40G January 11, 2019 FEMALE C03058009

KCF BENNETT 3008 M326  
 NJW 73S M326 TRUST 100W ET {DLF HYF IEF MSUDF MDF} P C02938213  
 NJW P606 72N DAYDREAM 73S

RRH MR FELT 3008  
 KCF MISS 459 F284  
 PW VICTOR BOOMER P606  
 NJW 94J DEW 72N

MSU TCF REVOLUTION 4R  
 RVP 4R CAPTIVATE 55C P C03006420  
 RVP 51X ACCENTUATE 98A

FELTONS LEGEND 242  
 MSU TCF RACHAEL ET 54N  
 RVP 6056 XCALIBUR 51X  
 RVP 533P YOKO ET 9Y

**19A RVP 4013 Knock Out 18K**  
 Polled RVP 18K January 6, 2022 FEMALE C03091913

EFBEEF TFL U208 TESTED X651 ET  
 INNISFAIL WHR X651/723 4013 ET {DLF HYF IEF MSUDF MDF} P C03054441  
 INNISFAIL P230 T723

NJW 73S M326 TRUST 100W ET  
 RVP 100W GENUINE 40G {DLF HYF IEF MSUDF MDF} P C03058009  
 RVP 4R CAPTIVATE 55C

EFBEEF FOREMOST U208  
 EFBEEF P606 MABEL R415  
 EF F745 FRANK P230  
 INNISFAIL 235 R501 ET

KCF BENNETT 3008 M326  
 NJW P606 72N DAYDREAM 73S  
 MSU TCF REVOLUTION 4R  
 RVP 51X ACCENTUATE 98A

EPD's CE: 0.5 BW: 3.9 WW: 58.4 YW: 97.6 M: 29.2 TM: 58.4

EPD's CE: 0.9 BW: 4.4 WW: 71.7 YW: 116.7 M: 27.8 TM: 63.7



LOT  
19A

- Ranks in the top 1% of the breed for weaning weight, yearling weight and marbling, the top 9% for carcass weight, top 10% for total maternal and the top 18% for rib-eye area
- Birth Weight: 84 lbs.
- This Innisfail daughter ranks on top for performance values in the offering



- Look at her daughter at foot
- A broody Mandate daughter
- A.I. bred to Glenlees AXA Evolve ET 112J on April 1, 2022 then exposed to NJW 79Z 199B Cowboss 113H ET after June 15, 2022. Preg checked safe to the A.I. service



## 20 GRH 66589 Mystic 16H

Polled RND 16H

January 29, 2020

FEMALE  
C03072599

R LEADER 6964  
/S MANDATE 66589 ET {DLF HYF IEF MSUDF MDF} P C03072177  
/S LADY DOMINO 0158X

GRH 50S FACTOR 10X  
GRH 10X MYSTIC 24B P C02997259  
GRH 236G MYSTIC 7P

HYALITE ON TARGET 936  
R MISS REVOLUTION 1009  
SHF RIB EYE M326 R117  
/S LADY DOMINO 652S  
WLB GLOBAL 72M 50S  
GRH 36N PRINCESS 12U  
REMITALL GOVERNOR 236G  
GRH 56G TAYLOR 3L

## 20A RVP 4013 Rv Mystic 30K

Polled RVP 30K

January 11, 2022

FEMALE  
C03091920

EFBEEF TFL U208 TESTED X651 ET  
INNISFAIL WHR X651/723 4013 ET {DLF HYF IEF MSUDF MDF} P C03054441  
INNISFAIL P230 1723

/S MANDATE 66589 ET  
GRH 66589 MYSTIC 16H P C03072599  
GRH 10X MYSTIC 24B

EFBEEF FOREMOST U208  
EFBEEF P606 MABEL R415  
EF F745 FRANK P230  
INNISFAIL 235 R501 ET  
R LEADER 6964  
/S LADY DOMINO 0158X  
GRH 50S FACTOR 10X  
GRH 236G MYSTIC 7P

EPD's CE: 4.1 BW: 2.1 WW: 52.7 YW: 85.4 M: 22.6 TM: 49

EPD's CE: 0.2 BW: 4.5 WW: 71.3 YW: 114.8 M: 24.5 TM: 60.2

- Ranks in the top 4% of the breed for weaning weight, yearling weight and marbling and the top 20% for total maternal
- Birth Weight: 84 lbs.
- An Innisfail daughter with high performance data





## HABITFORMING AND KEEPSAKE..



Glenlees AXA Evolve ET 112J - Service Sire

LOT  
21



RVP 4040 Gold Bullion 131E - Sire

- Ranks in the top 18% of the breed for rib-eye area
- A daughter of RVP 4040 Gold Bullion 131E, the Fort Knox son who is now working at Meridian Herefords, Hodgson, Manitoba
- A.I. bred to Glenlees AXA Evolve ET 112J on April 8, 2022 then exposed to NJW 79Z 199B Cowboss 113H ET after June 15, 2022. Preg checked safe to the A.I. service

**21 RVP 131E Habitforming 84H**  
 Polled RVP 84H January 26, 2020 FEMALE C03069852

BOYD FT KNOX 17Y XZ5 4040  
 RVP 4040 GOLD BULLION 131E (DLF HYF IEF MSUDF) P C03044657  
 5STAR 9001W CAROLINE 505

MSU TCF REVOLUTION 4R  
 RVP 4R FETCHING 20F P C03045585  
 RVP 100W CULTURED ET 77C

TH 22R 16S LAMBEAU 17Y  
 DOSS MY EYES ADORE U DHZ5  
 PWF RHF 25L WRANGLER 9001W  
 SSF 503 LADY MASTERPIECE 137  
 FELTONS LEGEND 242  
 MSU TCF RACHAEL ET 54N  
 NJW 73S M326 TRUST 100W ET  
 RVP 36N TOUCH OF GOLD ET 10T

EPD's CE: 2.4 BW: 1.8 WW: 56.6 YW: 88.4 M: 24 TM: 52.3

**21A RVP 6153 Keepsake 55K**  
 Polled RVP 55K January 26, 2022 FEMALE C03091929

R LEADER 6964  
 BOYD 31Z BLUEPRINT 6153 (DLF HYF IEF MSUDF MDF) P C03053820  
 NJW 91H 100W RITA 31Z ET

RVP 4040 GOLD BULLION 131E  
 RVP 131E HABITFORMING 84H P C03069852  
 RVP 4R FETCHING 20F

HYALITE ON TARGET 936  
 R MISS REVOLUTION 1009  
 NJW 73S M326 TRUST 100W ET  
 REMITALL RITA 91H  
 BOYD FT KNOX 17Y XZ5 4040  
 5STAR 9001W CAROLINE 505  
 MSU TCF REVOLUTION 4R  
 RVP 100W CULTURED ET 77C

EPD's CE: 7.8 BW: 0.8 WW: 57.8 YW: 89.1 M: 27.2 TM: 56.1



LOT  
21A

- Ranks in the top 12% of the breed for birth weight and top 15% for calving ease
- Birth Weight: 70 lbs.
- Low birth weight sharp fronted and fancy... we know how these Blueprint daughters turn out in pasture



- Ranks in the top 1% of the breed for carcass weight, top 3% for calving ease, top 5% for rib-eye, top 8% for birth weight, milk and total maternal and the top 10% for maternal calving ease and marbling
- A powerful daughter of RVP W18 Direction ET 119D with outstanding numbers let alone her beautiful phenotype
- A.I. bred to NJW M326 Trust 100W ET on April 1, 2022 then exposed to NJW 79Z 199B Cowboss 113H ET after June 15, 2022. Preg checked safe to A.I. service



LOT  
22

**22** **RVP 119D Gateway 726 {MDC}**  
 Polled RVP 726 January 22, 2019 FEMALE C03058028

SHF WONDER M326 W18 ET  
 RVP W18 DIRECTION ET 119D {DLF HYF IEF MSUDF MDC} P C03025919  
 STAR ROSE GARDON 13X ET

SSF 321L S109 ADVANCE 250  
 JLCS H250 MISS ADVANCE A27 E4 P C03043711  
 JLCS X53 FREDIA 969W A27

KCF BENNETT 3008 M326  
 SHF GOVERNESS 236G L37  
 REMITALL ONLINE 122L  
 GERBER 774 ROSY LANE 623S  
 GO 3196 ADVANCE S109  
 STAR SPIRIDGE KESSEY 321L ET  
 BECKLEY 934S ONTIME 969W  
 JLCS 28P VENUS T23 X53

EPD's CE: 11.8 BW: 0.3 WW: 61.3 YW: 102.4 M: 34.5 TM: 65.2

**22A** **RVP 576 Gateway Key 36K {MDF}**  
 Polled RVP 36K January 13, 2022 FEMALE C03091924

/S MANDATE 66589 ET  
 NJW 11B 6589 AUTHORITY 576 ET {DLF HYF IEF MSUDF} P C03079615  
 NJW 79Z 10W RITA 11B

RVP W18 DIRECTION ET 119D  
 RVP 119D GATEWAY 726 {DLF HYF IEF MSUDF MDC} P C03058028  
 JLCS H250 MISS ADVANCE A27 E4

R LEADER 6964  
 /S LADY DOMINO 0158X  
 LJR 023R WHITMORE 10W  
 BW 91H 100W RITA 79Z ET  
 SHF WONDER M326 W18 ET  
 STAR ROSE GARDON 13X ET  
 SSF 321L S109 ADVANCE 250  
 JLCS X53 FREDIA 969W A27

EPD's CE: 14 BW: -2.1 WW: 62.3 YW: 97.9 M: 33.1 TM: 64.3

- Ranks in the top 2% of the breed for calving ease and birth weight, top 5% for carcass weight, top 10% for weaning weight, rib-eye and total maternal, top 11% for milk and the top 12% for maternal calving ease
- Birth Weight: 59 lbs.
- Check out the birth weight and the numbers that go along with this Authority daughter



LOT  
22A



# GENUINE GOLD AND GOLD KEY...

## SELLING CHOICE - LOTS 23 AND 23A



LOT  
23

- Her mother, "Touch of Gold" is a silver trophy dam and a prolific donor female with thirty progeny lifetime. A daughter, 130Y, is a donor female for River Valley. Maternal sisters to 11G, have been selected by Mitchell Best, Lone Spruce, BLC Genetics, Michael Goodine, J & M Bellamy, Remital West, Medonte Highlands, Chula Vista, Ridgeview, Blairs Athol, AXA Polled Herefords, Spring Mountain Stock Farm, and Crystal Brook Farm. Maternal brothers have been selected by Lazy Boy Farms and Cedarwood Polled Herefords
- A.I. bred to NJW 11B 6589 Authority 57G ET on March 24, 2022 then exposed to NJW 79Z 199B Cowboss 113H ET after June 15, 2022. Preg checked safe to the A.I. service



NJW 11B 6589 Authority 57G - Service Sire

**23** **RVP Z400 Genuine Gold ET 11G**  
 Polled RVP 11G January 4, 2019 FEMALE C03061235

TH 133U 719T UPGRADE 69X  
 TDP CROSSOVER Z400 (DLF HYF IEF) P C02979607  
 ASH LIL PEANUT 203P

HF 4L BEYOND 36N  
 RVP 36N TOUCH OF GOLD ET 10T (DLF HYF IEF) P C02897731  
 HAROLDSON'S CANDACE 122L 27N

TH 122 71I VICTOR 719T  
 TH 14S 103R MEGAN 133U  
 MOHICAN MINT 19M  
 ASH MELODY 211M

FCC 60G MADDUX 4L  
 MISS 87D FORTUNE 707B 67J  
 REMITAL ONLINE 122L  
 GOLD-N KR 2Z CANDACE 55C

**EPD's** CE: -1.3 BW: 3.3 WW: 52 YW: 96.7 M: 23 TM: 49

**23A** **RVP 57G Gold Key 77K**  
 Polled RVP 77K February 6, 2022 FEMALE C03091939

/S MANDATE 66589 ET  
 NJW 11B 6589 AUTHORITY 57G ET (DLF HYF IEF MSUDF) P C03079615  
 NJW 79Z 10W RITA 11B

TDP CROSSOVER Z400  
 RVP Z400 GENUINE GOLD ET 11G (DLF HYF IEF MSUDF) P C03061235  
 RVP 36N TOUCH OF GOLD ET 10T

R LEADER 6964  
 /S LADY DOMINO 0158X  
 LJR 023R WHITMORE 10W  
 BW 91H 100W RITA 79Z ET

TH 133U 719T UPGRADE 69X  
 ASH LIL PEANUT 203P  
 HF 4L BEYOND 36N  
 HAROLDSON'S CANDACE 122L 27N

**EPD's** CE: 2.2 BW: 2.3 WW: 64.8 YW: 107.3 M: 27.3 TM: 59.7



LOT  
23A

- Ranks in the top 8% of the breed for yearling weight, top 10% for weaning weight and the top 15% for carcass weight
- Birth Weight: 83 lbs.
- An opportunity to own a daughter of a very prolific female!



# KANDY GIRL, KANDY, AND KANDACE...

- Ranks in the top 8% of the breed for fat and the top 18% for total maternal
- Maternal sisters are working for Valley Lane Farms and Big River Polled Herefords
- Pasture exposed to NJW 79Z 199B Cowboss 113H ET after June 15, 2022.



LOT  
24

24

## LONE-SPRUCE 9D Kandy Girl 10G

Polled

CMB 10G

February 11, 2019

FEMALE

C03059324

CRR 719 CATAPULT 109  
CRR 109 CATAPULT 322 (DLF HYF IEF MSUDF MDF) P C03042032  
CRR 713 KELLY 0117

TH 122 711 VICTOR 719T  
CRR 4037 ECLIPSE 808  
CRR 63J KODIAK 713  
CRR 9B KELLY 521

TRIARA WIDE LOAD 391W  
LONE-SPRUCE 391W KANDY 4B P C02995720  
MHPH MS 102K KANSAS 1024W

CRR 57G STAMINA ET 199S  
JOYCLIFF STARDUST 10S  
MHPH 504L KLONDIKE 102K  
MHPH MS 13P KANSAS 129T

EPD's CE: -5.3 BW: 4.2 WW: 60.9 YW: 97.3 M: 30.2 TM: 60.7

24A

## RVP 57G Kandy 107K

Polled

RVP 107K

March 6, 2022

FEMALE

C03091949

/S MANDATE 66589 ET  
NJW 11B 6589 AUTHORITY 57G ET (DLF HYF IEF MSUDF) P C03079615  
NJW 79Z 10W RITA 11B

R LEADER 6964  
/S LADY DOMINO 0158X  
LJR 023R WHITMORE 10W  
BW 91H 100W RITA 79Z ET

CRR 109 CATAPULT 322  
LONE-SPRUCE 9D KANDY GIRL 10G P C03059324  
LONE-SPRUCE 391W KANDY 4B

CRR 719 CATAPULT 109  
CRR 713 KELLY 0117  
TRIARA WIDE LOAD 391W  
MHPH MS 102K KANSAS 1024W

EPD's CE: 1 BW: 2.5 WW: 68.7 YW: 106.6 M: 30.9 TM: 65.3

- Ranks in the top 5% of the breed for weaning weight, top 8% for yearling weight and total maternal, the top 15% for carcass weight and the top 20% for milk
- Birth Weight: 72 lbs.



LOT  
24A

24B

## RVP 57G Kandace 108K

Polled

RVP 108K

March 6, 2022

FEMALE

C03091950

/S MANDATE 66589 ET  
NJW 11B 6589 AUTHORITY 57G ET (DLF HYF IEF MSUDF) P C03079615  
NJW 79Z 10W RITA 11B

R LEADER 6964  
/S LADY DOMINO 0158X  
LJR 023R WHITMORE 10W  
BW 91H 100W RITA 79Z ET

CRR 109 CATAPULT 322  
LONE-SPRUCE 9D KANDY GIRL 10G P C03059324  
LONE-SPRUCE 391W KANDY 4B

CRR 719 CATAPULT 109  
CRR 713 KELLY 0117  
TRIARA WIDE LOAD 391W  
MHPH MS 102K KANSAS 1024W

EPD's CE: 0.3 BW: 2.8 WW: 69.5 YW: 108 M: 30.9 TM: 65.7

- Ranks in the top 5% of the breed for weaning weight, top 8% for yearling weight and total maternal, the top 15% for carcass weight and the top 20% for milk
- Birth Weight: 74 lbs.



LOT  
24B



# HAVANA AND KEY TO HAVANA...



- Ranks in the top 18% of the breed for fat and the top 20% for maternal calving ease
- A.I. bred to Glenlees AXA Evolve ET 112J on June 3, 2022 then exposed to NJW 79Z 199B Cowboss 113H ET after June 15, 2022. Preg checked safe to the A.I. service



## 25 ELM-LODGE Havana 2H

Polled

TAX 2H

January 2, 2020

FEMALE  
C03071432

NJW FHF 9710 TANK 45P  
WORR OWEN TANKERAY Y79D ET {DLF HYF IEF MSUDF} P C03044660  
BR KLD ROSE MARIE D79 ET

CC CX UNITED 52S ET  
ELM-LODGE BREEZY 47B {DLF HYF IEF MSUDF} P C02995357  
ELM-LODGE 8F PATRICIA 32P

FHF 8403 STARBUCK 19H  
GV 579 VICTORIA 9710  
BR MOLER ET  
BR 122L ROSE 4020 ET  
REMITALL LAGRD POUNDER ET 204P  
SB 122L DOTTIE 109N ET  
ELM-LODGE JURASSIC 13J  
ELM-LODGE 5D FIRST KISS 8F

EPD's CE: -0.4 BW: 4 WW: 52.2 YW: 87.1 M: 23.8 TM: 49.9

## 25A RVP 273H Key To Havana 117K

Polled

RVP 117K

April 5, 2022

FEMALE  
C03091954

NJW 79Z 103C RIDGE 311F ET  
NJW 76S 311F RIDGE 273H {DLF HYF IEF MSUDF MDF} P C03085035  
NJW 55N STARDUST 76S

WORR OWEN TANKERAY Y79D ET  
ELM-LODGE HAVANA 2H P C03071432  
ELM-LODGE BREEZY 47B

NJW 73S 38W RIDGE 103C ET  
BW 91H 100W RITA 79Z ET  
NJW BW TRAILDUST 161L  
NJW 57G SPIRIT QUEEN 55N ET  
NJW FHF 9710 TANK 45P  
BR KLD ROSE MARIE D79 ET  
CC CX UNITED 52S ET  
ELM-LODGE 8F PATRICIA 32P

EPD's CE: -0.8 BW: 4.4 WW: 56.9 YW: 97 M: 29.7 TM: 58.2



- Ranks in the top 8% of the breed for fat
- Birth Weight: 92 lbs.



- Ranks in the top 13% of the breed for birth weight
- Out of donor mother, Rachael, maternal sibs have been selected by Cedarwood Polled Herefords, Meadow View Farm and Wascana Cattle Company
- Calved February 5, 2022 — male RVP 76K — retained
- A.I. bred to NJW 139C 103C Ridge 254G HP on April 14, 2022 then exposed to RVP 252F Justified 30J after June 15, 2022. Preg checked safe to the A.I. service



NJW 139C 103C Ridge 254G HP - Service Sire



LOT  
26

**26** **RVP 322 Gertie 76G**  
Polled RVP 76G  
CRR 719 CATAPULT 109  
**CRR 109 CATAPULT 322** (DLF HYF IEF MSUDF MDF) P C03042032  
CRR 713 KELLY 0117  
MSU TCF REVOLUTION 4R  
**MRF RACHAEL 4R 297** (DLF HYF IEF MSUDF) P C02993614  
MRF MISS DURANGO X60

January 24, 2019  
FEMALE  
C03058030  
TH 122 71V VICTOR 719T  
CRR 4037 ECLIPSE 808  
CRR 63J KODIAK 713  
CRR 9B KELLY 521  
FELTONS LEGEND 242  
MSU TCF RACHAEL ET 54N  
THM DURANGO 4037  
MRF VICKY N30

**27** **RVP 131E Joyful 73J**  
Polled RVP 73J  
BOYD FT KNOX 17Y XZ5 4040  
**RVP 4040 GOLD BULLION 131E** (DLF HYF IEF MSUDF) P C03044657  
5STAR 9001W CAROLINE 505  
RVP 9050 ARCHITECT 46A  
**RVP 46A GIDDY 1206** P C03058196  
RVP 29B ELATED 150E

January 26, 2021  
FEMALE  
C03080986  
TH 22R 16S LAMBEAU 17Y  
DOSS MY EYES ADORE U DHZ5  
PWF RHF 25L WRANGLER 9001W  
SSF 503 LADY MASTERPIECE 137  
BOYD WORLDWIDE 9050 ET  
RVP RCY 100W YE HAW 130Y  
RVP 100W BAZINGA 29B  
SHADY-BIRCH BASIL 11B

EPD's CE: 5.9 BW: 0.9 WW: 43.1 YW: 75.3 M: 23.6 TM: 46.7

EPD's CE: 7.1 BW: -0.3 WW: 63.9 YW: 95.8 M: 29.4 TM: 61.4

- AI bred May 13, 2022 to NJW 160B 028X Historic 81E ET. Vet checked safe on June 17, 2022. Pastured with RVP 9050 Architect 46A from June 9, 2022 until August 31, 2022.



NJW 160B 028X Historic 81E ET - Service Sire



LOT  
27



## MISS BOLD GOLD AND BLUEBELL...



- Ranks in the top 20% of the breed for maternal calving ease
- This Direction daughter is deep bodied, optimal in frame size with an excellent udder structure
- Her daughter, RVP 131E Just The Thing 15J, sells as lot 43
- Calved February 13, 2022 — male RVP 84K — retained
- A.I. bred to Glenlees AXA Evolve ET 112J on April 1, 2022 then exposed to RVP 252F Justified 30J after June 15, 2022. Preg checked safe to the A.I. service

**28** **RVP 119D Miss Bold Gold 123G {MDC}**  
 Polled RVP 123G February 20, 2019 FEMALE C03058198

SHF WONDER M326 W18 ET  
 RVP W18 DIRECTION ET 119D {DLF HYF IEF MSUDF MDC} P C03025919  
 STAR ROSE GARDON 13X ET

BOYD MASTERPIECE Q220  
 BENA Q220 MISS BOLD 1C P C03004949  
 RVP 12W MISS BOLD ZADA 37Z

KCF BENNETT 3008 M326  
 SHF GOVERNESS 236G L37  
 REMITALL ONLINE 122L  
 GERBER 774 ROSY LANE 623S

SHF RIB EYE M326 R117  
 SSF P606 MS VICTOR 803  
 RVP PCY 29F WHO'S THE BOSS 12W  
 MH 29F MISS BOLD 5240

**EPD's** CE: 2.4 BW: 2.4 WW: 52.9 YW: 86.9 M: 29.3 TM: 55.8

**29** **AXA 200C Bluebell 20F**  
 Polled AXA 20F January 21, 2018 FEMALE C03045164

GV CMR X151 MR 847 Z210  
 GOLDEN-OAK Z210 BIG STEP 200C {DLF HYF IEF MSUDF} P C03030693  
 SHF MAGGIE M326 W04 ET

NJW 73S M326 TRUST 100W ET  
 RVP 100W BLUEBELL 57B P C02993133  
 ELM-LODGE YELLOW ROSE 13Y

F REST EASY 847  
 GRANDVIEW CMR MS 424 X151 ET  
 KCF BENNETT 3008 M326  
 SHF GOVERNESS 236G L37

KCF BENNETT 3008 M326  
 NJW P606 72N DAYDREAM 73S  
 GOLDEN-OAK 4J MAXIMUM 28M  
 ELM-LODGE 52L SHOWSTOPPER 30S

**EPD's** CE: 4.9 BW: 1.8 WW: 50.5 YW: 81.1 M: 27 TM: 52.2



- Ranks in the top 20% of the breed for maternal calving ease
- Maternal sisters have been selected by Daniel Ray and Dorbay Polled Herefords, Dorchester, Ontario
- Calved February 20, 2022 — male RVP 96K — retained
- A.I. bred to NJW 11B 6589 Authority 57G ET on April 21, 2022 then exposed to RVP 252F Justified 30J Preg checked safe to the A.I. service



NJW 11B 6589 Authority 57G ET- Service Sire



- Ranks in the top 1% of the breed for milk, total maternal, rib-eye and carcass weight, top 2% for yearling weight and top 3% for weaning weight
- A beautiful granddaughter of Homegrown, tanky with outstanding maternal numbers
- Calved April 5, 2022 — male RVP 116K — retained
- A.I. bred to Glenlees AXA Evolve ET 112J on June 10, 2022 then exposed to RVP 252F Justified 30J after June 15, 2022. Preg checked safe to the A.I. service



Glenlees AXA Evolve ET 112J - Service Sire



LOT  
30

## 30 MOHICAN Mattie 85H

Polled MW85H

NJW 73S W18 HOMEGROWN 8Y ET  
DM 714 8Y WILLIAM 514C ET (DLF HYF IEF MDF) P A43836603  
DM BR SAVANNA 714 ET

MOHICAN TEN GAUGE 233A  
MOHICAN MATTIE 122D (DLF HYF IEF MSUDF) P A43690496  
GRANDVIEW CMR 1L MATTIE Y490ET

February 18, 2020

FEMALE  
C03079549

SHF WONDER M326 W18 ET  
NJW P606 72N DAYDREAM 73S  
DM BR SOONER  
CL 1 DOMINETTE 095K  
TH 133U 719T UPGRADE 69X  
MOHICAN LUCKY LADY 442U ET  
CMR GVP MR MATERNAL 156T  
DJB 46B BETH 1L

## 31 RVP 46A Heiress 67H

Polled RVP 67H

BOYD WORLDWIDE 9050 ET  
RVP 9050 ARCHITECT 46A (DLF HYF IEF) P C02981745  
RVP RCY 100W YE HAW 130Y

NJW 73S W18 HOMETOWN 10Y ET  
LFF HOMETOWN PRINCESS1216 1802 (DLF HYF IEF MSUDF MDF) P C03054680  
924 MISS LILY 1216

January 18, 2020

FEMALE  
C03069846

SHF RIB EYE M326 R117  
MSU TCF RACHAEL 22S ET  
NJW 73S M326 TRUST 100W ET  
RVP 36N TOUCH OF GOLD ET 10T  
SHF WONDER M326 W18 ET  
NJW P606 72N DAYDREAM 73S  
BHR 2T BARB WIRE 924 ET  
BOOT HILL BELL 884

EPD's CE: -1.2 BW: 4.2 WW: 70 YW: 117.5 M: 49.2 TM: 84.2 EPD's CE: 4 BW: 2.2 WW: 58.7 YW: 89.1 M: 28.3 TM: 57.7

- Dainty udder, sharp fronted, striking female
- Calved January 19, 2022 — male RVP 44K — retained
- A.I. bred to Glenlees AXA Evolve ET 112J on April 8, 2022 then exposed to RVP 252F Justified 30J after June 15, 2022. Preg checked safe to the A.I. service



LOT  
31



## CHERRISH AND EMMY...



**LOT  
32**

- Ranks in the top 5% of the breed for birth weight and top 12% for calving ease
- Calved March 1, 2022 — male RVP 103K — retained
- A.I. bred to Glenlees AXA Evolve ET 112J on April 30, 2022 then exposed to RVP 252F Justified 30J after June 15, 2022. Preg checked safe to the A.I. service



Glenlees AXA Evolve ET 112J - Service Sire

### **32** THM 53D **Cherrish** 9068 ET

Polled

THM

October 4, 2018

**FEMALE**  
C03064573

LJR 023R WHITMORE 10W  
NJW 84B 10W JOURNEY 53D {DLF HYF IEF MSUDF} P A43721750  
NJW 16S 100W JOEY 84B ET

GOLDEN-OAK 4J MAXIUM 28M  
THM 28M CHERISH 3108 ET {DLF HYF IEF MSUDF} P A43367270  
TRM NT J6 CHLOE L176 4263

KJ C6L J119 LOGIC 023R ET  
LJR MICKEY 278N  
NJW 73S M326 TRUST 100W ET  
TLELL 117F JOEY 16S  
EAGLE-RIDGE BLASTER ET 4J  
TA-BAR CHANTELE 15K  
TRM JWR 8001 VICTOR L176  
NT TRM VICTORIA PLATO J6

### **33** HP 33Z **Emmy** 34E

Polled

HP 34E

January 8, 2017

**FEMALE**  
C03043062

TH 122 71I VICTOR 719T  
JDH VICTOR 719T 33Z ET {DLF HYF IEF MSUDF} P A43294080  
JDH MS YANKEE 11U ET

MSU TCF REVOLUTION 4R  
FSL LADY REV 4R 50W 11A P A43370455  
FSL MISS ALLIE R413 50W

DRF JWR PRINCE VICTOR 71I  
KBCR 19D DOMINETTE 122  
AH YANKEE 10S  
JDF MS ISAACS 075 60N  
FELTONS LEGEND 242  
MSU TCF RACHAEL ET 54N  
KCF BENNETT 774 R413  
FSL LADY P606 25R

**EPD's** CE: 7.9 BW: -0.3 WW: 45 YW: 70.1 M: 16.7 TM: 39.2

**EPD's** CE: 6.6 BW: 1.7 WW: 58.4 YW: 92.1 M: 27.1 TM: 56.3



**LOT  
33**

- Ranks in the top 18% of the breed for calving ease, rib-eye and carcass weight
- Calved January 4, 2022 — female RVP 19K — retained
- A.I. bred to NJW 11B 6589 Authority 57G ET on March 24, 2022 then exposed to NJW 79Z 199B Cowboss 113H ET after June 15, 2022. Preg checked safe to the A.I. service



NJW 11B 6589 Authority 57G ET - Service Sire



- Ranks in the top 18% of the breed for fat
- Calved January 18, 2022 — male RVP 42K — retained
- A.I. bred to NJW 73S M326 Trust 100W ET on April 8, 2022 then exposed to RVP 252F Justified 30J after June 15, 2022. Preg checked safe to the A.I. service



NJW M326 Trust 100W ET - Service Sire



LOT  
34

34

## RVP 46A Top Grade 63G

Polled

RVP 63G

January 18, 2019

FEMALE  
C03058023

BOYD WORLDWIDE 9050 ET  
RVP 9050 ARCHITECT 46A (DLF HYF IEF) P C02981745  
RVP RCY 100W YE HAW 130Y

NJW 59R 88X RIBEYE 91Z  
RVP 91Z EPIC 93E P C03032078  
THM 8866 DOLCE 1060

SHF RIB EYE M326 R117  
MSU TCF RACHAEL 22S ET  
NJW 73S M326 TRUST 100W ET  
RVP 36N TOUCH OF GOLD ET 10T  
NJW 98S R117 RIBEYE 88X ET  
NJW 60D 131A LADYSPORT 59R ET  
THM GARMIN 9360  
THM LADY RECRUIT 8866 ET

EPD's

CE: 0.8

BW: 2.73

WW: 56.5

YW: 87.6

M: 27.9

TM: 56.2

35

## ANL J&R 845C Maple 46E 25G

Polled

KKL 25G

January 25, 2019

FEMALE  
C03059195

UPH PROSPECTOR P152  
WHITEHAWK WARRIOR 845C ET (DLF HYF IEF MSUDF MDF) P C03045176  
GRANDVIEW CMR 4003 BETH Y115ET

TH 71U 17Y MOUNTAINEER 420A  
ANL C HAR 420A MAPLE 34C 46E P C03054539  
ANL C GAR 17A MAPLE 86 ET 34C

HUTH PROSPECTOR K085  
UPH MANDY M863  
GRANDVIEW VIC H132 23G 4003 ET  
DJB 46B BETH 1L  
TH 22R 16S LAMBEAU 17Y  
TH 7N 45P RITA 71U  
TH 113W 11X HI-TECH 17A  
ANL 7N MAPLE 86R

EPD's

CE: 4.3

BW: 1.2

WW: 58.9

YW: 91.9

M: 32.2

TM: 61.7

- Ranks in the top 14% of the breed for milk, rib-eye and carcass weight, top 15% for total maternal and the top 18% for birth weight
- An outstanding female in all dimensions... only for those who would like to increase the profile of their front pasture
- Calved January 5, 2022 — male RVP 12K — retained
- A.I. bred to Glenlees AXA Evolve ET 112J on April 8, 2022 then exposed to RVP 252F Justified 30J after June 15, 2022. Preg checked safe to the A.I. service



LOT  
35



## ROSIE AND HANDS UP...



36

### MOHICAN Rosie 92G ET

Polled

MW 92G

February 23, 2019

FEMALE  
C03067349

EFBEEF TFL U208 TESTED X651 ET  
INNISFAIL WHR X651/723 4013 ET (DLF HYF IEF MSUDF MDF) P C03054441  
INNISFAIL P230 T723

NJW 73S W18 HOMEGROWN 8Y ET  
RHF 8Y ROSE GARDEN 4067B ET (DLF HYF IEF MSUDF MDF) P A43625321  
GRANDVIEW CMR MIS P606 X395 ET

EFBEEF FOREMOST U208  
EFBEEF P606 MABEL R415  
EF F745 FRANK P230  
INNISFAIL 235 R501 ET  
SHF WONDER M326 W18 ET  
NJW P606 72N DAYDREAM 73S  
PW VICTOR BOOMER P606  
GERBER 412T ROSY LANE 065K

EPD's CE: -3.1 BW: 4.5 WW: 66.4 YW: 110.8 M: 35.5 TM: 68.7

- Ranks in the top 1% of the breed for marbling, top 3% for total maternal, top 4% for yearling weight, top 5% for milk, top 8% for weaning weight and the top 12% for rib-eye and carcass weight
- A wonderful opportunity to acquire a Innisfail three-year-old with outstanding data
- Calved February 19, 2022 — male RVP 93K — retained
- A.I. bred to NJW 133A 6589 Manifest 87G ET on April 21, 2022 then exposed to NJW 11B 6589 Authority 57G ET from June 3, 2022 Preg checked safe to the A.I. service

37

### RVP 100W Hands Up 93H

Polled

RVP 93H

February 3, 2020

FEMALE  
C03069857

KCF BENNETT 3008 M326  
NJW 73S M326 TRUST 100W ET (DLF HYF IEF MSUDF MDF) P C02938213  
NJW P606 72N DAYDREAM 73S

NJW 76S P20 BEEF 38W ET  
JLCS 38W JAZZY 463 E24 P C03043712  
G JAZZY 719T 463

RRH MR FELT 3008  
KCF MISS 459 F284  
PW VICTOR BOOMER P606  
NJW 94J DEW 72N

SHF PROGRESS P20  
NJW 55N STARDUST 76S  
TH 122 711 VICTOR 719T  
G MISS INTIME 247

EPD's CE: 0.6 BW: 3.0 WW: 58.7 YW: 96.6 M: 32.4 TM: 61.8

- Ranks in the top 1% of the breed for fat, top 11% for rib-eye, top 12% for milk and the top 18% for total maternal
- You will never have enough daughters from the national champion "Trust"
- A maternal brother, RVP 100W Jackpot 37J, was selected by Square D Polled Herefords, Langbank, Saskatchewan
- Calved January 8, 2022 — female RVP 22K — retained
- A.I. bred to NJW 11B 6589 Authority 57G ET on May 11, 2022 then exposed to NJW 79Z 199B COWBOSS 113H ET from June 3, 2022



NJW 11B 6589 Authority 57G ET- Service Sire

LOT  
37



## ROSE HAVEN AND GENERATION...

38

### RVP 131E Rose Haven 110H

Polled

RVP 110H

February 16, 2020

FEMALE

C03069872

BOYD FT KNOX 17Y XZ5 4040  
RVP 4040 GOLD BULLION 131E (DLF HYF IEF MSUDF) P C03044657  
5STAR 9001W CAROLINE 505

RVP 100W AUTHORITY ET 70A  
RVP 70A FUCHIA ROSE 122F P C03046610  
REMITALL-W GD ROSE ET 16C

TH 22R 16S LAMBEAU 17Y  
DOSS MY EYES ADORE U DHZ5  
PWV RHF 25L WRANGLER 9001W  
SSF 503 LADY MASTERPIECE 137  
NJW 73S M326 TRUST 100W ET  
RED HILLS MS EMBRACE 8006 L3  
REMITALL-WEST HAVANA ET 33A  
REMITALL-WEST YELLOW ROSE 2Y

EPD's CE: -1.3 BW: 3.4 WW: 53.7 YW: 93.7 M: 22 TM: 48.9

- Ranks in the top 18% of the breed for fat
- This young two year old is a granddaughter of the great donor female at Remitall West – "Yellow Rose"
- Calved January 21, 2022 – male RVP 46K – retained
- A.I. bred to NJW 11B 6589 Authority 57G ET on April 8, 2022 then exposed to NJW 11B 6589 Authority 57G ET from June 3, 2022 Preg checked safe to the A.I. service



RVP 4040 GOLD BULLION 131E - Sire

LOT  
38

39

### RVP 100W Generation 102G

Polled

RVP 102G

February 4, 2019

FEMALE

C03058194

KCF BENNETT 3008 M326  
NJW 73S M326 TRUST 100W ET (DLF HYF IEF MSUDF MDF) P C02938213  
NJW P606 72N DAYDREAM 73S

TDP CROSSOVER Z400  
REMITALL-WEST MARVEL ET 67B (DLF HYF IEF) P C02995923  
REMITALL MARVEL 78T

RRH MR FELT 3008  
KCF MISS 459 F284  
PW VICTOR BOOMER P606  
NJW 94J DEW 72N  
TH 133U 719T UPGRADE 69X  
ASH LIL PEANUT 203P  
REMITALL PATRIOT ET 13P  
REMITALL MAVREL 105N

EPD's CE: -1.9 BW: 4.6 WW: 58 YW: 103.2 M: 21.8 TM: 50.8

- Ranks in the top 8% of the breed for fat, top 15% for yearling weight and top 18% for rib-eye
- This "Trust" three-year-old is a direct daughter of the great "Marvel" cow family made famous at Remitall
- Maternal sisters have been selected by Lamb Bros. Beef and Mohican West
- Calved February 28, 2022 – male RVP 102K – retained
- A.I. bred to NJW 76S 27A Long Range 203D ET on April 14, 2022 then exposed to RVP 252F Justified 30J after June 15, 2022. Preg checked safe to A.I. service



NJW 76S 27A Long Range 203D ET - Service Sire

LOT  
39



# JOJO AND JOYFUL MELODY...



- Birth weight: 90 lbs,
- Weaning weight: 756 lbs.
- Ranks in the top 10% of the breed for weaning and yearling weight and the top 15% for total maternal
- A.I. bred to NJW 139C 103C Ridge 254G HP on March 31, 2022 then exposed to RVP 9050 Architect 46A from June 9, 2022 Preg checked safe to A.I. service



NJW 139C 103C Ridge 254G HP- Service Sire

40	RVP 203D Jojo 36J	FEMALE	41	RVP 8Y Joyful Melody 116J {MDF}	FEMALE
Polled	RVP 36J	January 14, 2021	Polled	RVP 116J	February 24, 2021
		C03082115			C03084008
	NJW 135U 10Y HOMETOWN 27A	NJW 73S W18 HOMETOWN 10Y ET		SHF WONDER M326 W18 ET	KCF BENNETT 3008 M326
	NJW 76S 27A LONG RANGE 203D ET {DLF HYF IEF MSUDF MDF} P C03070970	NJW 4037 34S DURANGO VACA 135U		NJW 73S W18 HOMEGROWN 8Y ET {DLF HYF IEF MSUDF MDC} P C02987563	SHF GOVERNESS 236G L37
	NJW 55N STARDUST 76S	NJW BW TRAILDUST 161L		NJW P606 72N DAYDREAM 73S	PW VICTOR BOOMER P606
		NJW 57G SPIRIT QUEEN 55N ET			NJW 94J DEW 72N
	CHURCHILL KICKSTART 501C ET	CHURCHILL RED BULL 200Z		MOHICAN BRICK M13B	BOYD POWERHOUSE 2028
	PCL 501C LADY 32F P C03046417	HVH OKSANA 4L 33N		TDP MELODY 82E {DLF HYF IEF MSUDF} P C03043740	LAKE BJG PERFECT MISS 325U ET
	MCCOY 719T LADY ET 46D	TH 122 71I VICTOR 719T		TDP PEANUT 50A	KJ HVH 33N REDEEM 485T ET
		MCCOY 30N LADY 37S			TDP PEANUT 404U ET
EPD's	CE: 0.0 BW: 3.9 WW: 66 YW: 105.4 M: 29.3 TM: 62.3		EPD's	CE: 1.5 BW: 4.3 WW: 57 YW: 95.4 M: 34.2 TM: 62.7	



- Ranks in the top 8% of the breed for milk and the top 15% total maternal
- A maternal sister, RVP Z426 Gemma 22G, was selected by Aaron Doty
- A.I. bred to NJW 160B 028X Historic 81E ET on May 27, 2022 then exposed to RVP 73S 34F Settler 159H ET from June 21, 2022 Preg checked safe to A.I. service



# JOY DEVINE AND JUST THE THING...

- Ranks in the top 8% of the breed for maternal calving ease, top 12% for rib-eye, top 16% for total maternal and the top 18% for milk
- A.I. bred to NJW 133A 6589 Manifest 87G ET on May 27, 2022 then exposed to RVP 73S 34F Settler 159H ET from June 21, 2022 Preg checked safe to A.I. service



LOT  
42

42

## RVP 203D Joy Devine 69J

Polled

RVP 69J

January 25, 2021

FEMALE  
C03082116

NJW 135U 10Y HOMETOWN 27A  
NJW 76S 27A LONG RANGE 203D ET (DLF HYF IEF MSUDF MDF) P C03070970  
NJW 55N STARDUST 76S

NJW 73S M326 TRUST 100W ET  
RVP 100W DIVINE ET 32D (DLF HYF IEF MSUDF) P C03024507  
STAR ROSE GARDON 13X ET

NJW 73S W18 HOMETOWN 10Y ET  
NJW 4037 34S DURANGO VACA 135U  
NJW BW TRAILDUST 161L  
NJW 57G SPIRIT QUEEN 55N ET  
KCF BENNETT 3008 M326  
NJW P606 72N DAYDREAM 73S  
REMITALL ONLINE 122L  
GERBER 774 ROSY LANE 623S

EPD's

CE: 3.6

BW: 3.2

WW: 60.7

YW: 98.5

M: 32

TM: 62.4

43

## RVP 131E Just The Thing 15J (MDC)

Polled

RVP 15J

January 5, 2021

FEMALE  
C03083569

BOYD FT KNOX 17Y XZ5 4040  
RVP 4040 GOLD BULLION 131E (DLF HYF IEF MSUDF) P C03044657  
5STAR 9001W CAROLINE 505

RVP W18 DIRECTION ET 119D  
RVP 119D MISS BOLD GOLD 123G (MDC) P C03058198  
BENA 0220 MISS BOLD 1C

TH 22R 16S LAMBEAU 17Y  
DOSS MY EYES ADORE U DH25  
PWF RHF 25L WRANGLER 9001W  
SSF 503 LADY MASTERPIECE 137  
SHF WONDER M326 W18 ET  
STAR ROSE GARDON 13X ET  
BOYD MASTERPIECE 0220  
RVP 12W MISS BOLD ZADA 37Z

EPD's

CE: 0.7

BW: 3.4

WW: 61.8

YW: 96.6

M: 26

TM: 56.9

- Her mother, RVP 119D Miss Bold Gold 123G sells as lot 28
- A.I. bred to Boyd 31Z Blueprint 6153 on March 31, 2022 then exposed to RVP 9050 Architect 46A from June 9, 2022 Preg checked safe to A.I. service



Boyd 31Z Blueprint 6153 - Service Sire



LOT  
43



# Thurston Livestock

Ivor & Katrina Thurston | 243 Pine Grove Rd RR1 | Lanark ON K0G 1K0 | Phone: 613-324-4864 | Email: ivort88@gmail.com



**44**

**TL 84F EVERLAST 13K**

Polled

THUR 13K

January 07, 2022

**FEMALE**

C03093243

LCX PERFECTO 11B ET  
BG LCC 11B PERFECTO 84F (DLF HYF IEF MSUDF MDF) P C03087853  
BG 100W NICKY 31C

IVRT 90X AMMUNITION 226A  
TL 226A EVERLAST 105E (DLF HYF IEF MSUDF) P C03033140  
WILGOR 55K KEYLINE 42S ET 12W

NJW 98S R117 RIBEYE 88X ET  
WLL ZOEY 3Z  
NJW 73S M326 TRUST 100W ET  
BG MS DOMINO 90Z  
WLB LEGO 83T 90X  
BBPH 24K KAY 101U  
REMITALL SUPER DUTY 42S ET 12W  
WILGOR 174H KEYLINE 29F 55K

A complete package. Red eyed, red necked, red to the ground. Soggy and deep through her middle 1/3 with neck extension and balance throughout. 13K's dam is a cow we campaigned successfully, she topped off her show career being named Supreme Champion Female at Perth Fair all breeds show in 2019 with 180 head. Last I checked, there are only 15 Perfecto progeny registered in Canada, so she could be the first available by auction. Stretch your hand out for this one, she's worth every penny!

EPD's CE: 5.3 BW: 2.1 WW: 63.3 YW: 100.1 M: 32.5 TM: 64.2



**BG LCC 11B PERFECTO 84F - Sire**



**TL 226A EVERLAST 105E - Dam**



## NJW 11B 6589 AUTHORITY 57G ET 11B57G

- Homozygous Polled
- Ranks in the top 1% of the breed for weaning weight, top 2% for yearling weight, total maternal and carcass weight, top 8% for calving ease, top 10% for birth weight and the top 20% for milk
- Feature service sire with outstanding documentation



NJW 11B 6589 AUTHORITY 57G ET - Service Sire

## RVP 9050 ARCHITECT 46A RVP 46A

- Birth weight: 78 lbs.
- Weaning weight: 898 lbs.
- Yearling weight: 1040 lbs.
- Ranks in the top 4% of the breed for birth weight, top 18% for calving ease, milk and total maternal and the top 20% for marbling



RVP 9050 ARCHITECT 46A - Service Sire

## NJW 79Z 199B COWBOSS 113H ET 79Z 113H

- Homozygous Polled
- Ranks in the top 2% of the breed for milk, top 4% for total maternal, top 8% for fat and the top 10% for rib-eye
- Used extensively in the pasture this summer



NJW 79Z 199B COWBOSS 113H ET - Service Sire

## NJW 76S 27A LONG RANGE 203D ET 76S 203D

- Heterozygous Horned/Polled
- Multi-trait leader for weaning weight, yearling weight, milk, total maternal
- Ranks in the top 2% of the breed for total maternal, top 4% for milk and yearling weight and the top 5% for weaning weight



NJW 76S 27A LONG RANGE 203D ET - Service Sire





*Congratulations*  
TO THE LEES FAMILY...

...on their Reserve Champion tracing back to a River Valley cow, purchased in the Genetic Design Sale.

CELEBRATE SUCCESS...

RVP 106A Cameo Girl 45C



2018 CWA CHAMPION FEMALE AND MISS WORLD HEREFORD

River Valley Polled Herefords

IT TAKES A  
CHAMPION...





CWA CHAMPION HEIFER CALF, HAROLDSON'S MILEY 48G 65J,  
PURCHASED BY RIVER VALLEY POLLED HEREFORDS.



Congratulations to Glenlees  
for the 2021 CWA Grand  
Champion title. River Valley  
purchased the calf pictured  
at side, Glenlees SNBR 173D  
Reva 65J



Reva 20H, the daughter of Reva 32F, owned by River Valley

# ...TO RAISE A CHAMPION



# Thank You to all of our Genetic Designs XVII Buyers

ELMLODGE POLLED HEREFORDS - Indian River ON  
BROOKS FARMS - Alameda SK  
GLENLEES FARM - Arcola SK  
MCDONALD FARM - Grand Rapids MI USA  
DIANA NANNE - Almonte ON  
HMS HI-CLIFFE - Outlook SK  
MEDONTE HIGHLANDS POLLED HEREFORDS - Mississauga ON  
KLR POLLED HEREFORDS - Maple Creek SK  
AXA FARMS - Hampton NB  
TINLEY HARVIE - Olds AB  
ANDY CARTER - Amherst NS  
CHEVALIER POLLED HEREFORDS - Swan Lake MB  
ROBERT LOCKRIDGE - Centreville ON  
ROSELYN FARM - South Hampton NS  
REMITALL WEST - Olds AB  
C&T CATTLE CO. - Arcola SK  
SQUARE D POLLED HEREFORD - Langbank SK  
J&L CATTLE CO - Jeromesville Ohio USA  
MIKE GOODINE - Bear Island NB  
LONE PINE CATTLE SERVICES - Vibank SK  
MOHICAN WEST - Laurel Montana USA  
AIRRIESS ACRES - Wadena SK  
DOUBLE H CATTLE CO - McNab/Braeside ON  
ROCKEDGE HEREFORDS - Inverary ON

NLCL CATTLE CO - Danville QC  
SHADY BIRCH FARM - Grafton ON  
CEDAR RIDGE HEREFORDS - Brighton ON  
CLAUDE ET ANDRE BEAUMONT - Ste-Catherine-De-La-J-Cartier QC  
CL GENETICS - Harrowsmith ON  
LONE SPRUCE POLLED HEREFORDS/DON BELLEMY - Walkerton ON  
MEADOW VIEW FARM - Pembroke ON  
ROCK BOTTOM FARM - Consecon ON  
BEEBE PLAIN FARM - Chemin Marlinton Ogden QC  
AIDEN LODGE - Ch Du Pinnacle Danville QC  
KAYLEE WELLS - Jasper ON  
AMANDA BUSHEY - Shemin Clairemont Danville QC  
ALORA FARMS - Odessa ON  
FRANK DEJONG - Brockville ON  
BLAIR ATHOL POLLED HEREFORD - Arcola SK  
A-J'S ACRES - New Liskard ON  
SHAMROCK POLLED HEREFORDS - Maxville ON  
MEL B CATTLE CO - Renfrew ON  
ANL POLLED HEREFORDS - Steelman SK  
HAROLDSON'S POLLED HEREFORDS - Wawota SK  
LEONARD ALLEN - Oxford NS  
OULTON'S FARM - Windsor NS  
RIDGEVIEW FARMS - Alto MI USA



# Terms & Conditions

## **Terms:**

The terms of the sale are cash or cheque, payable at par at the sale location. The right of property shall not pass until after settlement has been made; no invoicing on buyers in attendance unless previous arrangements have been made. Every animal sells to the highest bidder and in cases of disputes, the auctioneer's decision will be final. Announcements from the auction block will take precedence over the printed matter in the catalogue. Current exchange rates will be announced sale day. All monies are in Canadian funds.

## **Certificate Of Registration:**

Each animal will carry papers issued by the Canadian Hereford Association unless otherwise stated. A certificate of registry duly transferred will be furnished to the buyer for each animal after payment has been made.

## **Pedigree Estimates**

Pedigree Estimates (PE) are created on the projected mating of the animal's sire and dam based on averages of the two, creating estimated values that do not hold the same accuracy of actual EPDs issued from the association and should be used as such.

## **Health:**

All animals in the sale have met all necessary health requirements.

## **Guarantee:**

Each animal becomes the purchaser's risk immediately after the animal is sold. All animals in this sale will be sold under the terms and guarantees set forth by the Canadian Hereford Association with regard to health, freedom from defects and from both reproductive and specific genetic unsoundness.

## **Pregnancy Information:**

All serviceable age females have been pregnancy examined by an accredited veterinarian, giving an estimated length of gestation. This estimated gestation period shall be used only as a guideline to calving and is not a guarantee of actual service.

## **Liabilities:**

All persons attend the sale at their own risk. The seller, facility owner and sale manager assume no liability legal or otherwise, for any accidents that occur. It is understood that T Bar C Cattle Co. (2013) Ltd. is acting only as a medium between buyer and seller and is not responsible for any failure on the part of either party to live up to his obligations. Neither does T Bar C Cattle Co. (2013) Ltd. assume any financial obligations to collect or enforce collection of any monies between parties and any legal action that may in exceptional cases be taken must be between the buyer and the seller. T Bar C Cattle Co. (2013) Ltd. assumes no responsibility for any credit extended by the seller to the buyer. The buyer must look to the seller for fulfillment of all guarantees and representations made hereunder.

## **Delivery:**

Will be provided at cost at the buyers option and risk. Instructions for delivery must be given at time of settlement. No cattle will be released until after the conclusion of the sale.

## **Phone, Mail, Wire Bids:**

Bidders unable to attend the sale may phone, wire or mail their bids and instructions to the sale manager, auctioneer or special representatives. Bids must be received in sufficient time prior to the sale.

## **Insurance:**

We strongly recommend that insurance is purchased for full value.

## **Errors:**

All announcements at sale time, written or oral, supersede any written material in the catalogue.





## Notes





**GLENLEES AXA**

# EVOLVE ET 112J

**S:** NJW 79Z Z311 ENDURE 173D ET **D:** RVP 106A CAMEO GIRL 45C

CE 1.7 • BW 4.6 • WW 73.5 • YW 115.1 • M 29.3 • MCE 1.3

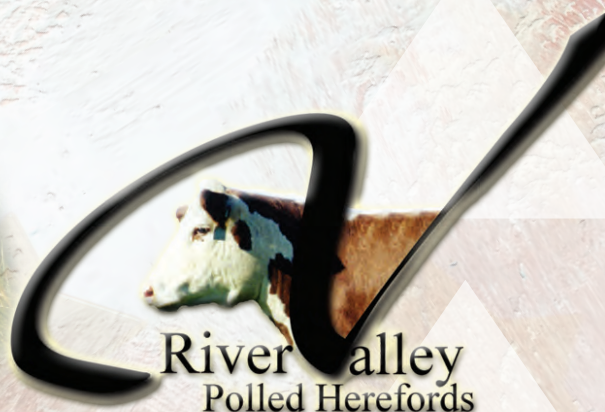


**NJW 73S M326**

# TRUST 100W

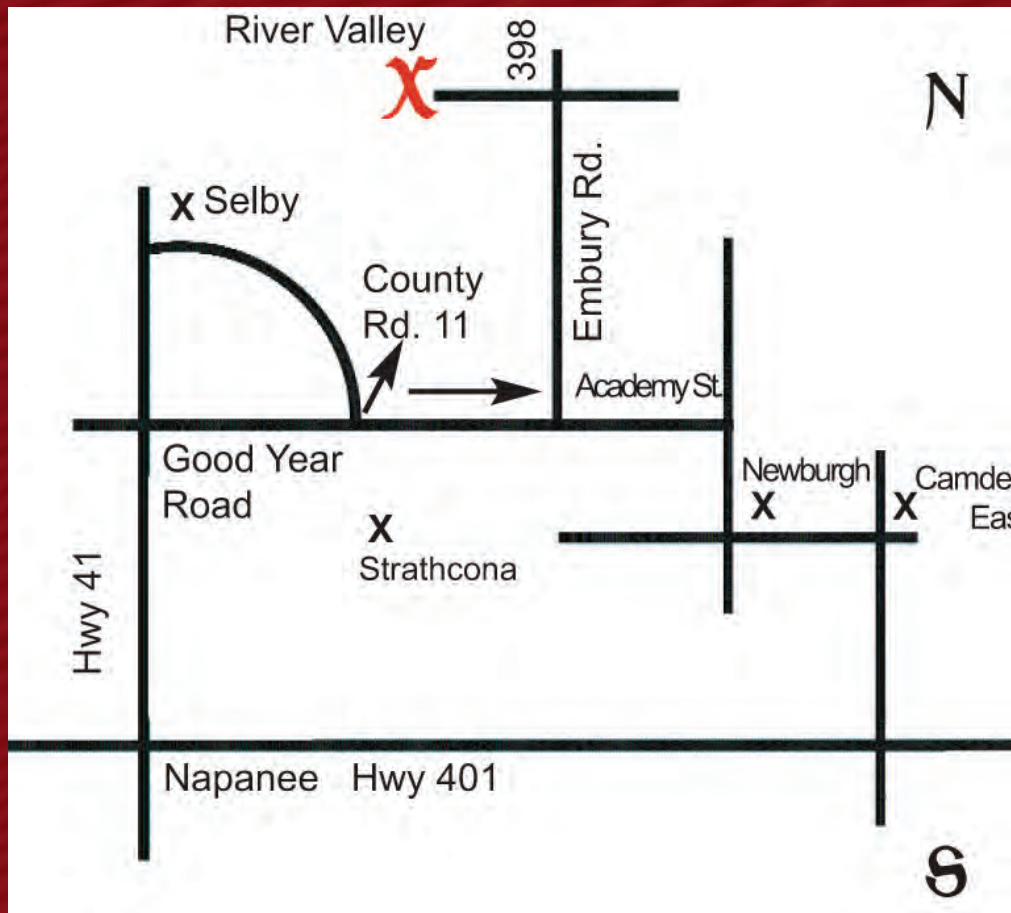
**S:** KCF BENNETT 3008 M326 **D:** NJW P606 72N DAYDREAM 73S

CE 1.8 • BW 3.6 • WW 65.9 • YW 115.0 • M 35.0 • MCE 2.4





**Return Undeliverable  
Canadian Addresses To:  
T Bar C Cattle Co. Ltd.  
Box 2330  
Warman, SK S0K 4S0**



## Directions

**From the West**, take Hwy 401 to Napanee  
Exit on Hwy 41 North (Exit 579)  
Turn right on Goodyear Road  
Goodyear Road runs into County Road 11  
Go straight on County Road 11 to Embury  
Road  
River Valley is located at 398 Embury Road

**From the East**, take Hwy 401 to Camden East  
Turn left at 4-way stop on Camden East  
Turn right at 3-way stop on Newburgh  
Turn left at Academy Street  
Turn right at Embury Road  
River Valley is located at 398 Embury Road

**From Toronto Airport, follow 401 East to Exit 579**  
1½ to 2 hours driving time

**From Syracuse, NY Airport, North on  
Interstate  
81 to the Canadian Border take Highway  
401 West**

Created by

**Today's**  
**Publishing**